

Caledonian Primary School (5384)

2008 School Level Report

Please check the data in this report. If, after comparing it with your own records, you deem it to be incorrect or incomplete, follow the directions on the following website:

- <http://www.education.vic.gov.au/management/schoolimprovement/performancecd/>
then select 'School Performance Reports'.
-
-

Contents

	Page No.
Privacy	3
SFO Density and LBOTE	4
Assessment of Reading Prep to Year 2	5-6
Teacher Judgments against the VELs	7-15
NAPLAN - Reading	16
- Writing	17
- Numeracy	18
AIM - Reading	19
- Mathematics	20
Teacher Assessment of Student Progress (PSD students)	21-22
Enrolment	23
Student Absence	24
Opinion Surveys - Parent	25
- Staff	26
Performance & Development Culture	27
Staff Sick Leave	28
Teaching Staff Retention	29
Bank Balances	30

Privacy

When reporting on the school's performance to the school community, care must be taken to avoid the disclosure of information that can directly or indirectly identify an individual. This may be a particular issue when reporting on the achievement of specific cohorts of students or the opinions of staff where there are small numbers.

In situations where privacy cannot be assured, schools may wish to report on the mean result or provide a written comment on school, year level or cohort performance.

Where the School Level Report is provided to school council members as part of any annual reporting process, or used for discussion on a school's performance, such as in consultation with the school community in the school self-evaluation process, it is important to remind school community members of their duty to only use this information for the purpose it was provided, and that the material must be kept confidential.

It is important to note that information that identifies an individual or can be used with other readily available information to identify a person is now protected by the *Information Privacy Act 2000* (<http://www.education.vic.gov.au/about/deptpolicies/informationprivacy.htm>).

SFO Density and LBOTE

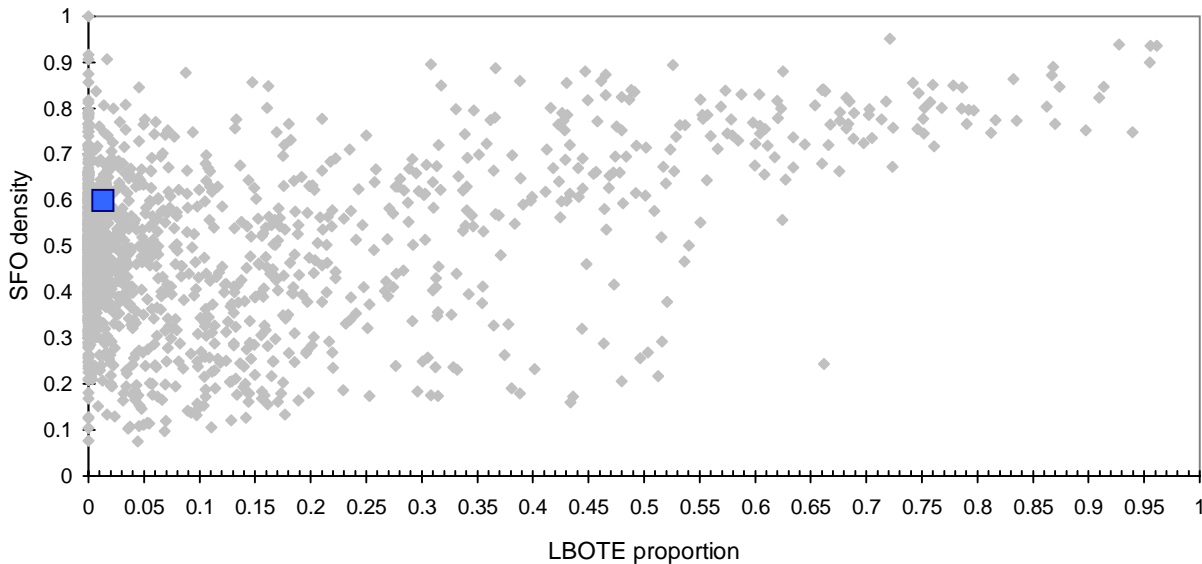
School no: 5384

School name: Caledonian Primary School

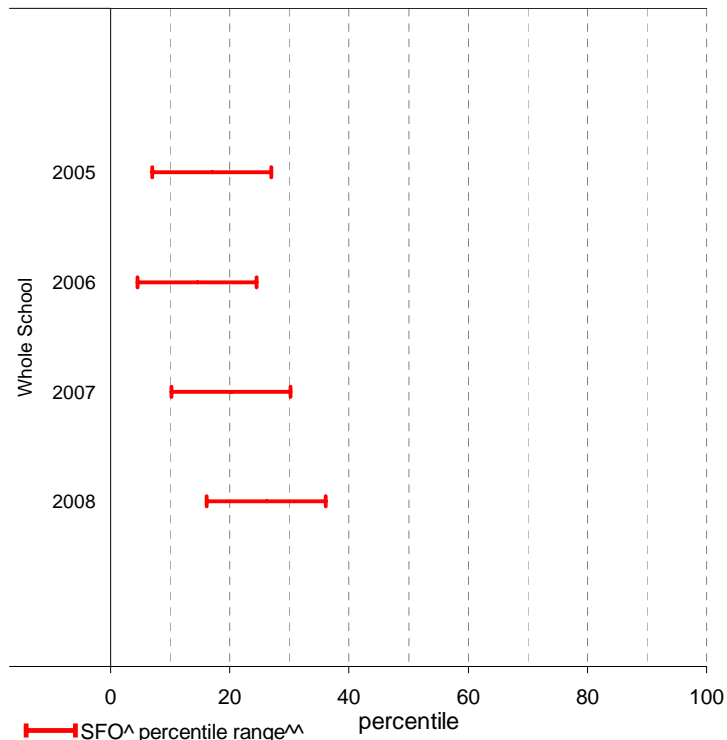
Explanation: The chart below plots the school's 2008 SFO (Student Family Occupation) density[^] and LBOTE (Language Background Other Than English) proportion* against that of all government schools. This school is highlighted as a square on the chart.

	2001	2002	2003	2004	2005	2006	2007	2008
SFO density [^] :					0.64	0.66	0.63	0.60
LBOTE proportion*:	0.00	0.00	0.00	0.00	0.00	0.01	0.01	0.01

School's 2008 SFO density and LBOTE proportion against that of all government schools



School's SFO[^] percentile range^{^^} over time



Notes: [^] The higher the SFO density, the lower the SFO percentile and the lower the socio-economic status (SES).
^{^^} The school's SFO percentile range shows the 20% of schools with an SFO Density most like this school.
 * From 2007, a student is LBOTE if either the student or one parent/guardian speaks a language other than English at home. Prior to 2007, a student is LBOTE if the student or one of the parents was born in a non-English speaking country.

Assessment of Reading: Prep to Year 2

School no: 5384

School name: Caledonian Primary School

Explanation: Students' ability to read unsighted text is assessed at the end of each year. The data presented here includes 'deemed not capable' students.

More detailed information (including data where deemed not capable students are excluded) is available in the Assessment of Reading report, available from the School Performance Reports website.

Source of data: Data transmitted from school to DEECD via an online web-form.

	Prep									Year 1									Year 2																	
	School								State	School								State	School								State									
	2004		2005		2006		2007		2008	2008	2004		2005		2006		2007		2008	2008	2004		2005		2006		2007		2008	2008						
	(No.)	%	(No.)	%	(No.)	%	(No.)	%	(No.)	%	(No.)	%	(No.)	%	(No.)	%	(No.)	%	(No.)	%	(No.)	%	(No.)	%	(No.)	%	(No.)	%								
Level 1																																				
100%	(9)	37.5	(14)	40.0	(8)	42.1	(7)	30.4	(14)	58.3	69.0	(41)	97.6	(24)	85.7	(22)	71.0	(13)	86.7	(26)	100.0	94.7														
90-99%	(9)	37.5	(12)	34.3	(9)	47.4	(14)	60.9	(9)	37.5	25.4			(3)	10.7	(9)	29.0	(1)	6.7																	
80-89%			(4)	11.4							2.3							(1)	6.7																	
51-79%					(1)	5.3	(2)	8.7	(1)	4.2	1.5																									
50% or below	(6)	25.0	(5)	14.3	(1)	5.3					1.7	(1)	2.4	(1)	3.6																					
Total	(24)	100.0	(35)	100.0	(19)	100.0	(23)	100.0	(24)	100.0	100.0	(42)	100.0	(28)	100.0	(31)	100.0	(15)	100.0	(26)	100.0	100.0														
Subtotal 90-100%	(18)	75.0	(26)	74.3	(17)	89.5	(21)	91.3	(23)	95.8	94.5	(41)	97.6	(27)	96.4	(31)	100.0	(14)	93.3	(26)	100.0	99.4														
Level 5																																				
100%	(5)	20.8	(5)	14.3	(2)	10.5	(4)	17.4	(8)	33.3	45.3	(36)	85.7	(18)	64.3	(11)	35.5	(6)	40.0	(20)	76.9	81.0	(24)	100.0	(36)	92.3	(18)	75.0	(16)	64.0	(18)	100.0	90.4			
90-99%	(8)	33.3	(9)	25.7	(7)	36.8	(11)	47.8	(13)	54.2	36.1	(5)	11.9	(5)	17.9	(19)	61.3	(9)	60.0	(6)	23.1	16.9			(2)	5.1	(4)	16.7	(9)	36.0		8.8				
80-89%			(2)	5.7	(3)	15.8	(5)	21.7	(1)	4.2	5.2			(1)	3.6	(1)	3.2									(1)	4.2									
51-79%			(5)	14.3	(3)	15.8	(3)	13.0			3.6																									
50% or below	(11)	45.8	(14)	40.0	(4)	21.1			(2)	8.3	9.8	(1)	2.4	(4)	14.3											(1)	2.6	(1)	4.2							
Total	(24)	100.0	(35)	100.0	(19)	100.0	(23)	100.0	(24)	100.0	100.0	(42)	100.0	(28)	100.0	(31)	100.0	(15)	100.0	(26)	100.0	100.0	(24)	100.0	(39)	100.0	(24)	100.0	(25)	100.0	(18)	100.0	100.0			
Subtotal 90-100%	(13)	54.2	(14)	40.0	(9)	47.4	(15)	65.2	(21)	87.5	81.3	(41)	97.6	(23)	82.1	(30)	96.8	(15)	100.0	(26)	100.0	97.9	(24)	100.0	(38)	97.4	(22)	91.7	(25)	100.0	(18)	100.0	99.2			
Level 15																																				
100%												(4)	9.5	(3)	10.7	(2)	6.5	(3)	20.0	(3)	11.5				(8)	33.3	(12)	30.8	(3)	12.5	(2)	8.0	(3)	16.7	62.9	
90-99%												(24)	57.1	(12)	42.9	(11)	35.5	(10)	66.7	(22)	84.6				(16)	66.7	(23)	59.0	(15)	62.5	(16)	64.0	(14)	77.8	33.2	
80-89%												(6)	14.3	(2)	7.1	(5)	16.1	(1)	6.7								(2)	5.1	(3)	12.5	(4)	16.0	(1)	5.6	1.8	
51-79%												(3)	7.1	(2)	7.1	(12)	38.7			(1)	3.8						(1)	4.2	(3)	12.0			0.8			
50% or below												(5)	11.9	(9)	32.1	(1)	3.2	(1)	6.7								(2)	5.1	(2)	8.3			1.4			
Total												(42)	100.0	(28)	100.0	(31)	100.0	(15)	100.0	(26)	100.0	100.0				(24)	100.0	(39)	100.0	(24)	100.0	(25)	100.0	(18)	100.0	100.0
Subtotal 90-100%												(28)	66.7	(15)	53.6	(13)	41.9	(13)	86.7	(25)	96.2	86.4				(24)	100.0	(35)	89.7	(18)	75.0	(18)	72.0	(17)	94.4	96.1
Level 20																																				
100%																								(11)	45.8	(15)	38.5	(2)	8.3	(7)	28.0	(3)	16.7	47.4		
90-99%																								(12)	50.0	(18)	46.2	(15)	62.5	(10)	40.0	(14)	77.8	47.1		
80-89%												(1)	4.2	(4)	10.3	(3)	12.5	(3)	12.0							(2)	8.3	(5)	20.0	(1)	5.6		2.4			
51-79%																										(2)	8.3	(2)	8.3			0.9				
50% or below																										(2)	5.1	(2)	8.3			2.2				
Total												(24)	100.0	(39)	100.0	(24)	100.0	(25)	100.0	(18)	100.0	100.0				(24)	100.0	(39)	100.0	(24)	100.0	(25)	100.0	(18)	100.0	100.0
Subtotal 90-100%												(23)	95.8	(33)	84.6	(17)	70.8	(17)	68.0	(17)	94.4	94.5														

	2004	2005	2006	2007	2008	2004	2005	2006	2007	2008	2004	2005	2006	2007	2008
No. of students DNC ¹ :	0	2	0	0	1	1	1	1	0	0	0	1	0	2	1
No. of students at risk ² :	6	9	2	2	1	1	5	1	0	0	0	4	6	7	1

Notes:

¹ Students can be DNC (deemed not capable) only if they meet one of the conditions (insufficient English, receiving D&I funding, insufficient attendance at the school or referred from Reading Recovery) AND read below the minimum standard.

² The number of students at risk is the number of students reading at less than 90% accuracy at Level 1 for Prep, Level 5 for Year 1 or Level 15 for Year 2.

Assessment of Reading: Prep to Year 2

School no: 5384

School name: Caledonian Primary School

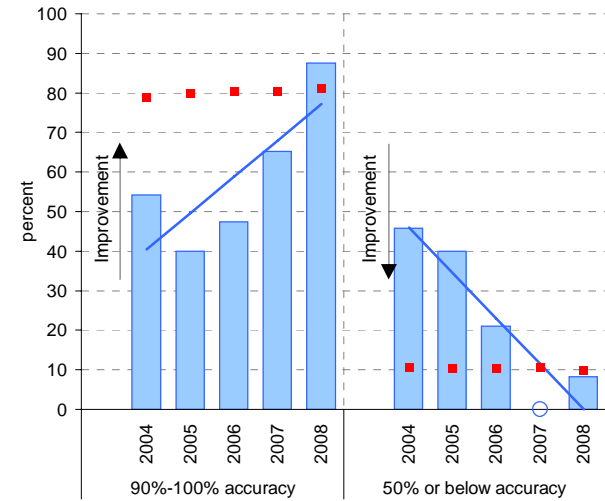
Explanation: Students' ability to read unsighted text is assessed at the end of each year.

Source of data: Data transmitted from school to DEECD via an online web-form.

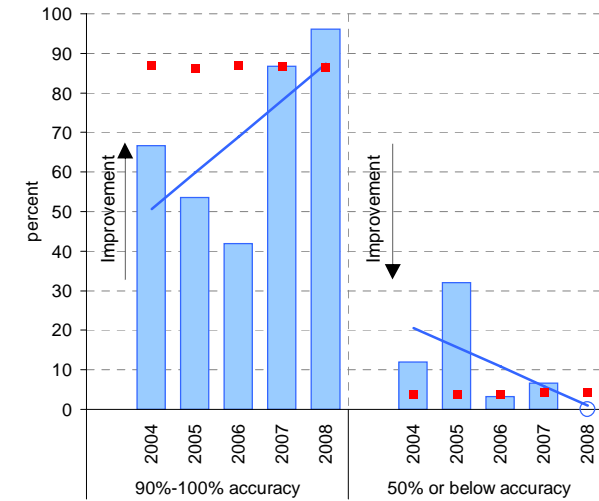
Notes: * The school trendline is being trialled. It is only plotted when there is data for each calendar year.

^ This data is highly skewed, with a lot of schools obtaining the best possible result, particularly in Year 2. The maximum achievable percentile is therefore significantly less than 100.

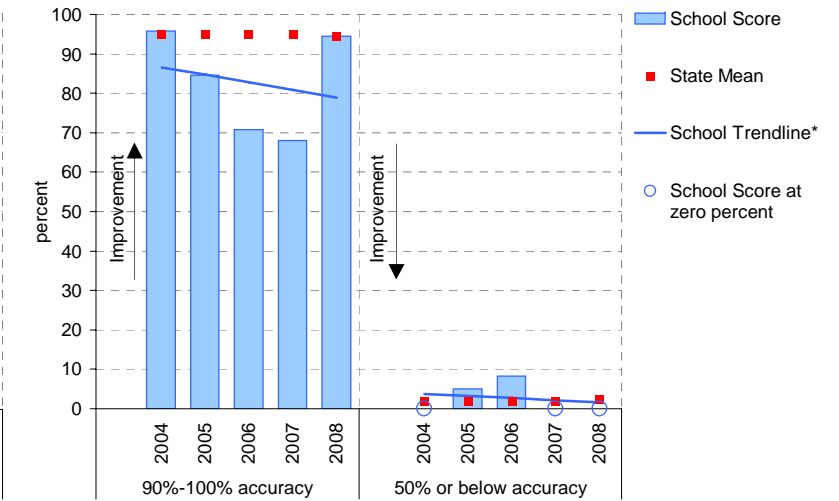
Year level: Prep
Text level: Level 5



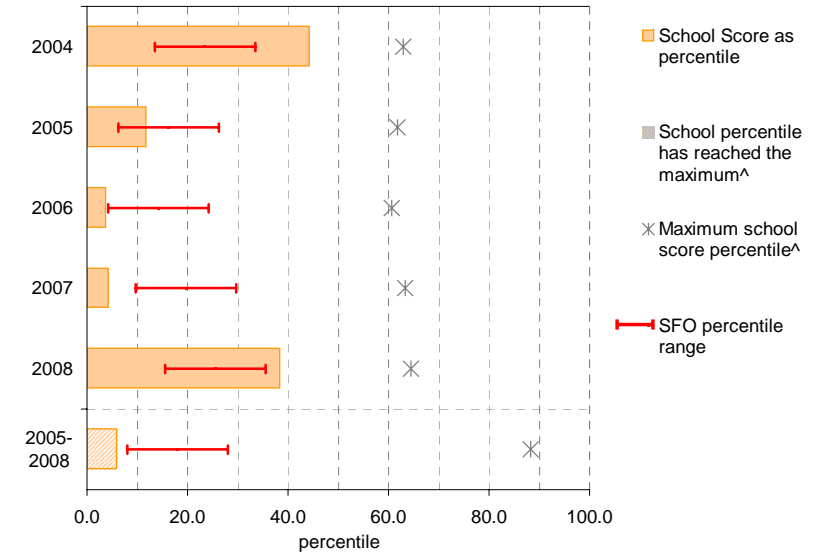
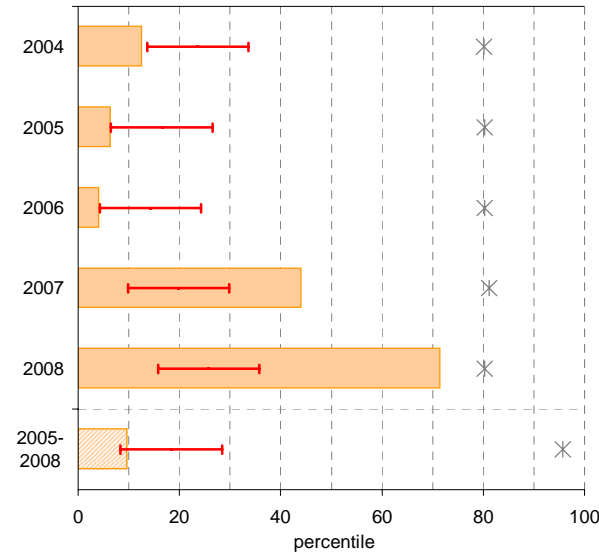
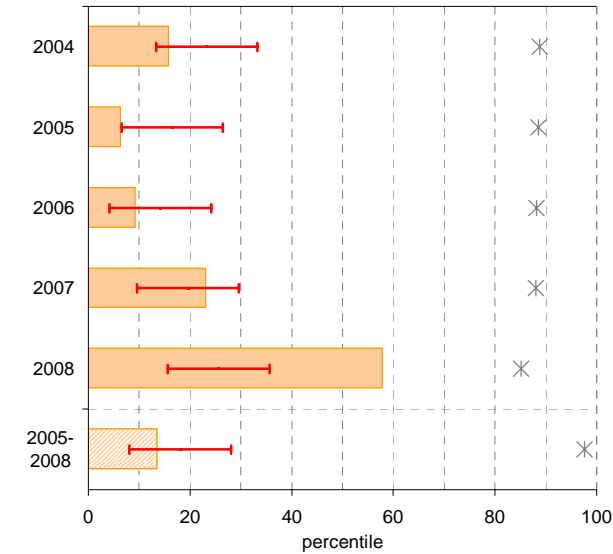
Year level: Year 1
Text level: Level 15



Year level: Year 2
Text level: Level 20



90%-100% accuracy as percentile against SFO percentile range



Teacher Judgments against the VELS - Year levels Prep-6 combined

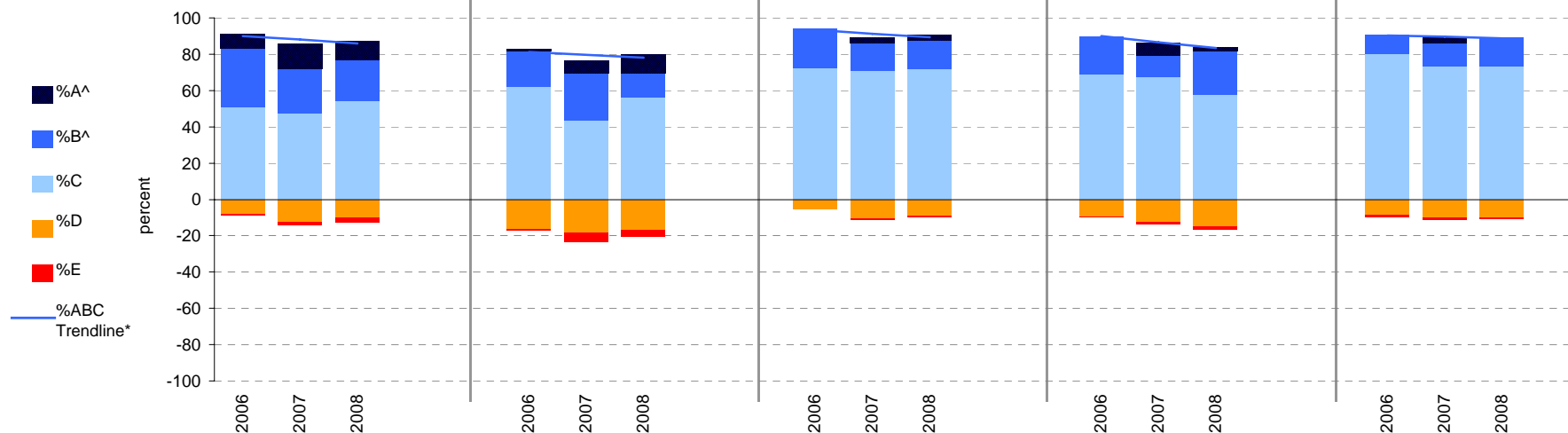
School no: 5384

School name: Caledonian Primary School

Source of data: Data retrieved electronically from CASES21.

Explanation: Teacher judgments of student achievement against the VELS.

Year Levels:	Reading							Writing					Speaking & Listening					Number					Measurement, Chance & Data								
	total students	% A^	% B^	% C	% D	% E	total students	% A^	% B^	% C	% D	% E	total students	% A^	% B^	% C	% D	% E	total students	% A^	% B^	% C	% D	% E	total students	% A^	% B^	% C	% D	% E	
Prep-6 (combined)	2006	181	8	33	51	8	1	181	1	20	62	16	1	182	0	22	73	5	0	181	0	21	69	9	1	181	0	10	80	8	1
	2007	154	14	25	47	12	2	154	7	26	44	18	5	154	3	16	71	10	1	154	7	12	68	12	1	154	3	13	73	10	1
	2008	147	10	22	54	10	3	147	10	13	56	17	3	147	3	16	72	9	1	147	2	24	58	15	1	147	0	16	73	10	1



Notes: * The school trendline is only plotted when there is data for each calendar year.
 ^ The cutoff between grades A and B changed in 2007. Further information is available on the following website:
<http://www.education.vic.gov.au/studentlearning/studentreports/schools/whatsnew.htm>.

Teacher Judgments against the VELS - English (primary)

School no: 5384

School name: Caledonian Primary School

Source of data: Data retrieved electronically from CASES21.

Explanation: Teacher judgments of student achievement against the VELS.

Notes: * The school trendline is only plotted when there is data for each calendar year.

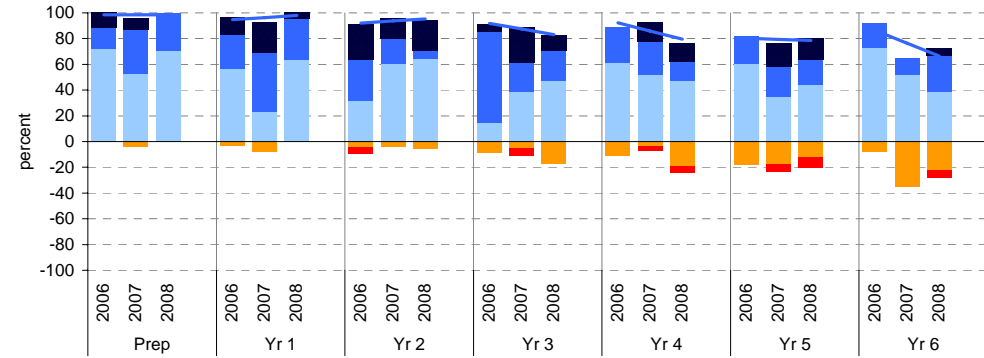
** In 2006, approx. 850 schools assessed their students against the 0.25 VELS scale. 2006 benchmarks are therefore based on a subset of schools.

^ The cutoff between grades A and B changed in 2007. Further information is available on the following website: <http://www.education.vic.gov.au/studentlearning/studentreports/schools/whatsnew.htm>.

^^ 2008 benchmarks and percentiles will be calculated in August, when data from all schools has been submitted.

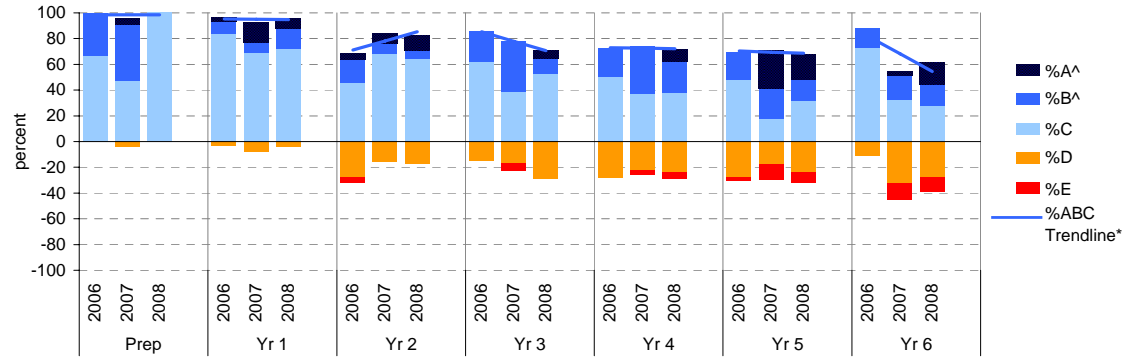
Reading

	total students	% of students by grade					Mean Score			total students	% of students by grade					Mean Score			
		A^	B^	C	D	E	School	State**			A^	B^	C	D	E	School	State**		
Prep	2006	18	11	17	72	0	0	0.97	1.01	Yr 4	2006	18	0	28	61	11	0	2.94	2.96
	2007	23	9	35	52	4	0	0.96	1.01		2007	27	15	26	52	4	4	3.02	2.97
	2008	24	0	29	71	0	0	1.01			2008	21	14	14	48	19	5	2.89	
Yr 1	2006	30	13	27	57	3	0	1.60	1.57	Yr 5	2006	33	0	21	61	18	0	3.38	3.44
	2007	13	23	46	23	8	0	1.73	1.57		2007	17	18	24	35	18	6	3.46	3.45
	2008	25	4	32	64	0	0	1.57			2008	25	16	20	44	12	8	3.45	
Yr 2	2006	22	27	32	32	5	5	2.20	2.04	Yr 6	2006	26	0	19	73	8	0	3.97	3.94
	2007	25	16	20	60	4	0	2.08	2.06		2007	31	0	13	52	35	0	3.81	3.95
	2008	17	24	6	65	6	0	2.07			2008	18	6	28	39	22	6	3.86	
Yr 3	2006	34	6	71	15	9	0	2.71	2.49										
	2007	18	28	22	39	6	6	2.58	2.50										
	2008	17	12	24	47	18	0	2.47											



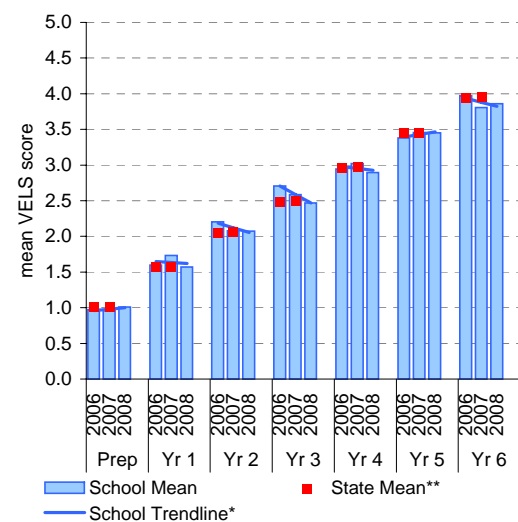
Writing

	total students	% of students by grade					Mean Score			total students	% of students by grade					Mean Score			
		A^	B^	C	D	E	School	State**			A^	B^	C	D	E	School	State**		
Prep	2006	18	0	33	67	0	0	0.94	0.97	Yr 4	2006	18	0	22	50	28	0	2.88	2.89
	2007	23	4	43	48	4	0	0.98	0.97		2007	27	0	37	37	22	4	2.90	2.91
	2008	24	0	0	100	0	0	0.92			2008	21	10	24	38	24	5	2.82	
Yr 1	2006	30	3	10	83	3	0	1.44	1.47	Yr 5	2006	33	0	21	48	27	3	3.33	3.38
	2007	13	15	8	69	8	0	1.56	1.49		2007	17	29	24	18	18	12	3.49	3.39
	2008	25	8	16	72	4	0	1.50			2008	25	20	16	32	24	8	3.43	
Yr 2	2006	22	5	18	45	27	5	1.85	1.95	Yr 6	2006	26	0	15	73	12	0	3.92	3.88
	2007	25	8	8	68	16	0	1.95	1.96		2007	31	3	19	32	32	13	3.67	3.89
	2008	17	12	6	65	18	0	1.93			2008	18	17	17	28	28	11	3.81	
Yr 3	2006	34	0	24	62	15	0	2.48	2.42										
	2007	18	0	39	39	17	6	2.36	2.43										
	2008	17	6	12	53	29	0	2.37											

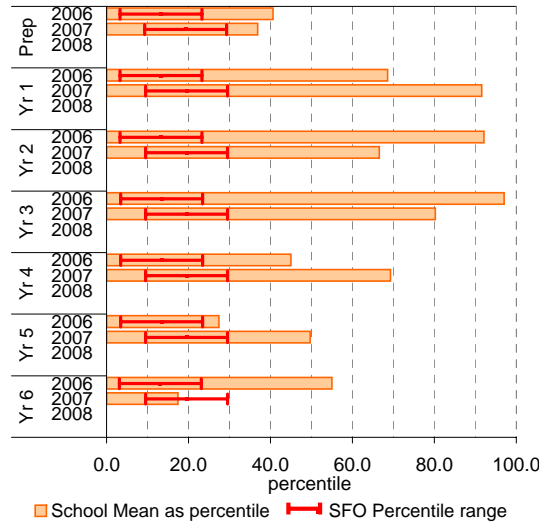


Reading

School Mean against State Mean^^

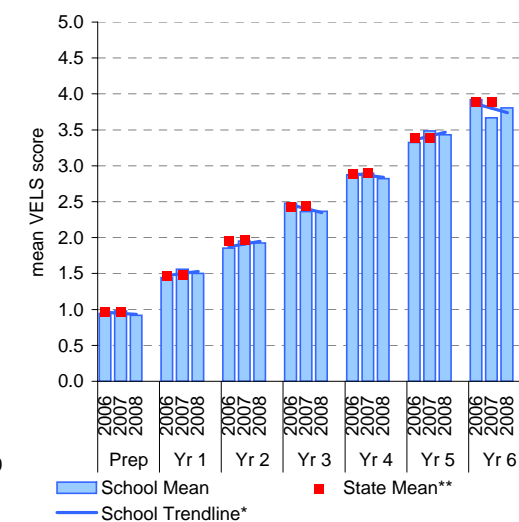


School Mean as percentile against SFO percentile range^^

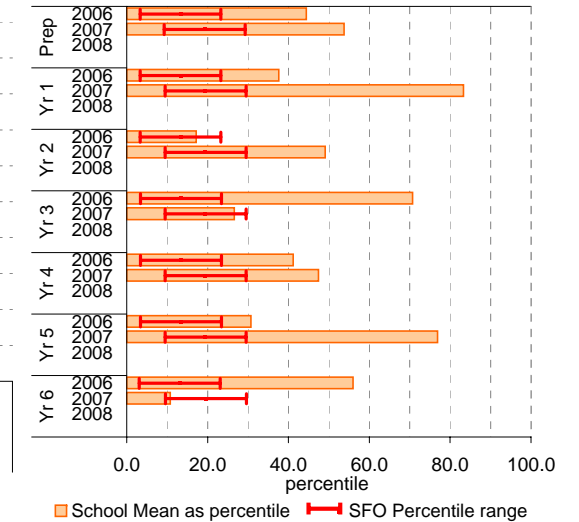


Writing

School Mean against State Mean^^



School Mean as percentile against SFO percentile range^^



Teacher Judgments against the VELS - English (primary)

School no: 5384

School name: Caledonian Primary School

Source of data: Data retrieved electronically from CASES21.

Explanation: Teacher judgments of student achievement against the VELS.

Notes: * The school trendline is only plotted when there is data for each calendar year.

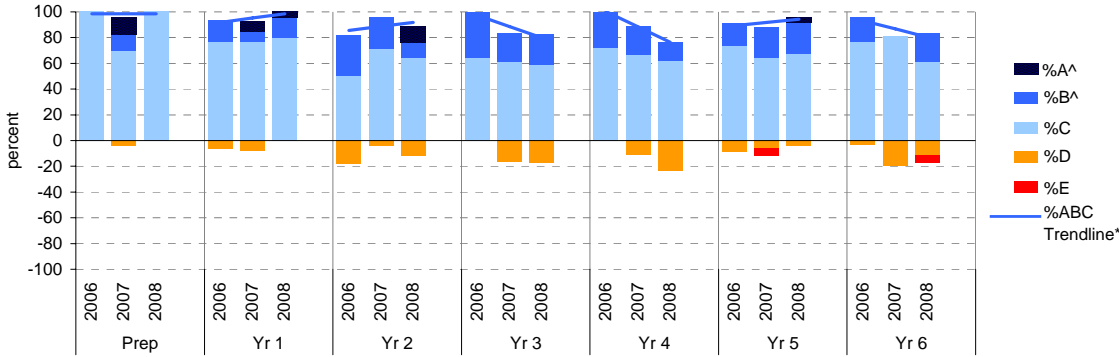
** In 2006, approx. 850 schools assessed their students against the 0.25 VELS scale. 2006 benchmarks are therefore based on a subset of schools.

^ The cutoff between grades A and B changed in 2007. Further information is available on the following website: <http://www.education.vic.gov.au/studentlearning/studentreports/schools/whatsnew.htm>.

^^ 2008 benchmarks and percentiles will be calculated in August, when data from all schools has been submitted.

Speaking and Listening

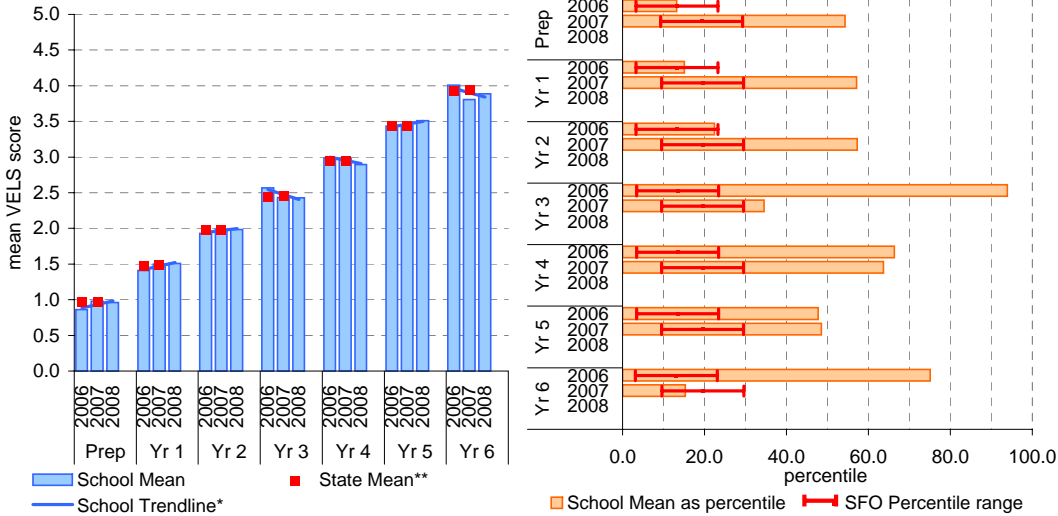
	total students	% of students by grade					Mean Score			total students	% of students by grade					Mean Score			
		A^	B^	C	D	E	School	State**			A^	B^	C	D	E	School	State**		
Prep	2006	18	0	0	100	0	0	0.86	0.97	Yr 4	2006	18	0	28	72	0	0	2.99	2.94
	2007	23	13	13	70	4	0	0.98	0.97		2007	27	0	22	67	11	0	2.98	2.94
	2008	24	0	0	100	0	0	0.96			2008	21	0	14	62	24	0	2.89	
Yr 1	2006	30	0	17	77	7	0	1.41	1.48	Yr 5	2006	34	0	18	74	9	0	3.43	3.43
	2007	13	8	8	77	8	0	1.50	1.48		2007	17	0	24	65	6	6	3.44	3.43
	2008	25	4	16	80	0	0	1.51			2008	25	4	24	68	4	0	3.51	
Yr 2	2006	22	0	32	50	18	0	1.93	1.98	Yr 6	2006	26	0	19	77	4	0	4.01	3.93
	2007	25	0	24	72	4	0	1.99	1.98		2007	31	0	0	81	19	0	3.81	3.94
	2008	17	12	12	65	12	0	1.99			2008	18	0	22	61	11	6	3.89	
Yr 3	2006	34	0	35	65	0	0	2.57	2.45										
	2007	18	0	22	61	17	0	2.43	2.46										
	2008	17	0	24	59	18	0	2.43											



Speaking and Listening

School Mean against State Mean^^

School Mean as percentile against SFO percentile range^^



Teacher Judgments against the VELS - Mathematics (primary)

School no: 5384

School name: Caledonian Primary School

Source of data: Data retrieved electronically from CASES21.

Explanation: Teacher judgments of student achievement against the VELS.

Notes: * The school trendline is only plotted when there is data for each calendar year.

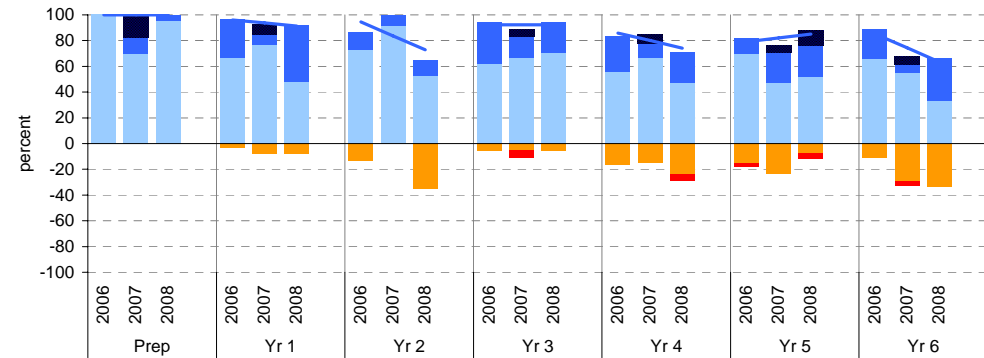
** In 2006, approx. 850 schools assessed their students against the 0.25 VELS scale. 2006 benchmarks are therefore based on a subset of schools.

^ The cutoff between grades A and B changed in 2007. Further information is available on the following website: <http://www.education.vic.gov.au/studentlearning/studentreports/schools/whatsnew.htm>.

^^ 2008 benchmarks and percentiles will be calculated in August, when data from all schools has been submitted.

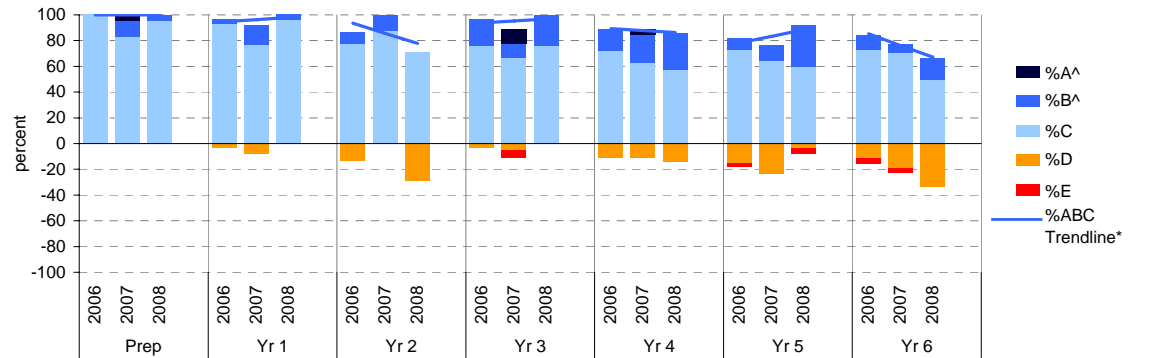
Number

	total students	% of students by grade					Mean Score			total students	% of students by grade					Mean Score			
		A^	B^	C	D	E	School	State**			A^	B^	C	D	E	School	State**		
Prep	2006	18	0	0	100	0	0	0.92	1.00	Yr 4	2006	18	0	28	56	17	0	3.00	2.95
	2007	23	17	13	70	0	0	1.07	1.00		2007	27	7	11	67	15	0	2.95	2.96
	2008	24	0	4	96	0	0	0.91			2008	21	0	24	48	24	5	2.80	
Yr 1	2006	30	0	30	67	3	0	1.50	1.51	Yr 5	2006	33	0	12	70	15	3	3.31	3.43
	2007	13	8	8	77	8	0	1.52	1.51		2007	17	6	24	47	24	0	3.43	3.44
	2008	25	0	44	48	8	0	1.56			2008	25	12	24	52	8	4	3.50	
Yr 2	2006	22	0	14	73	14	0	1.90	1.99	Yr 6	2006	26	0	23	65	12	0	3.93	3.93
	2007	25	0	8	92	0	0	1.93	1.99		2007	31	6	6	55	29	3	3.76	3.95
	2008	17	0	12	53	35	0	1.81			2008	18	0	33	33	33	0	3.86	
Yr 3	2006	34	0	32	62	6	0	2.53	2.46										
	2007	18	6	17	67	6	6	2.46	2.48										
	2008	17	0	24	71	6	0	2.46											



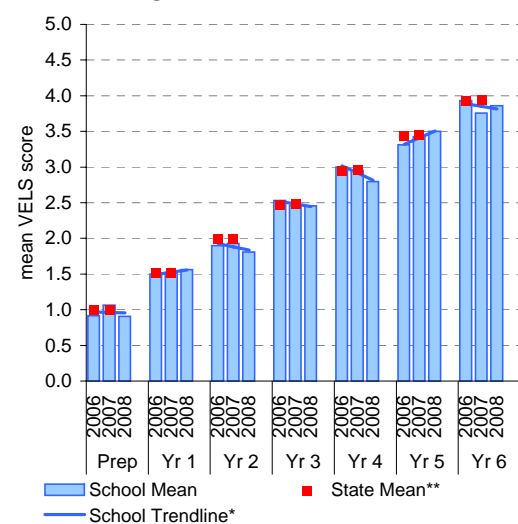
Measurement, Chance and Data

	total students	% of students by grade					Mean Score			total students	% of students by grade					Mean Score			
		A^	B^	C	D	E	School	State**			A^	B^	C	D	E	School	State**		
Prep	2006	18	0	0	100	0	0	0.94	0.97	Yr 4	2006	18	0	17	72	11	0	2.94	2.94
	2007	23	4	13	83	0	0	0.97	0.97		2007	27	4	22	63	11	0	2.98	2.95
	2008	24	0	4	96	0	0	0.89			2008	21	0	29	57	14	0	2.90	
Yr 1	2006	30	0	3	93	3	0	1.40	1.48	Yr 5	2006	33	0	9	73	15	3	3.32	3.42
	2007	13	0	15	77	8	0	1.42	1.49		2007	17	0	12	65	24	0	3.38	3.43
	2008	25	0	4	96	0	0	1.50			2008	25	0	32	60	4	4	3.46	
Yr 2	2006	22	0	9	77	14	0	1.86	1.97	Yr 6	2006	26	0	12	73	12	4	3.88	3.92
	2007	25	0	12	88	0	0	1.96	1.98		2007	31	0	6	71	19	3	3.74	3.93
	2008	17	0	0	71	29	0	1.72			2008	18	0	17	50	33	0	3.83	
Yr 3	2006	34	0	21	76	3	0	2.54	2.45										
	2007	18	11	11	67	6	6	2.47	2.46										
	2008	17	0	24	76	0	0	2.47											

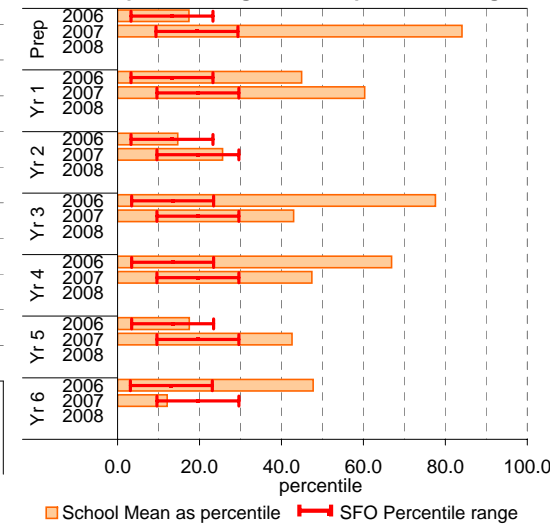


Number

School Mean against State Mean^^

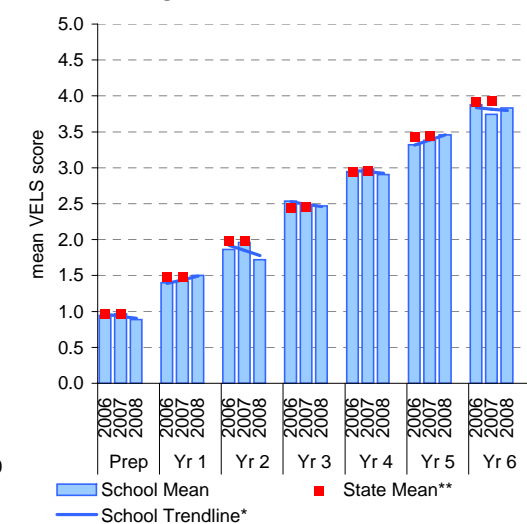


School Mean as percentile against SFO percentile range^^

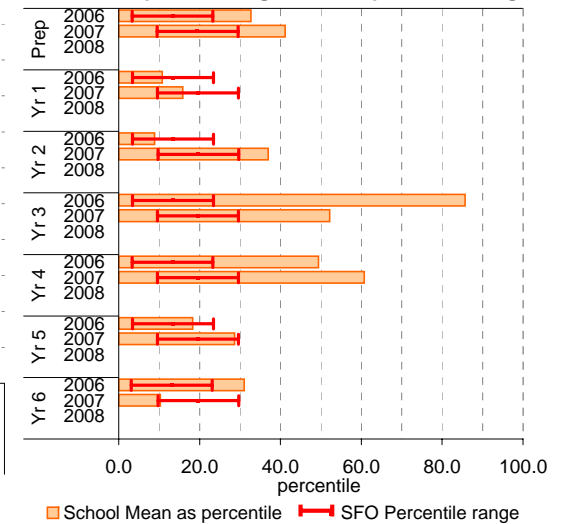


Measurement, Chance and Data

School Mean against State Mean^^



School Mean as percentile against SFO percentile range^^



Teacher Judgments against the VELS - English (primary)

School no: 5384
School name: Caledonian Primary School
Source of data: Data retrieved electronically from CASES21.
Explanation: Teacher judgments of student achievement against the VELS.

Writing

Year Level	Year	Total ¹	Assessed ²	Level 1			Level 2				Level 3				Level 4				Level 5				Level 6				Level 6E			School mean	State mean [^]	Difference between school and state mean [^]							
				0.00	0.50	1.00	1.25	1.50	1.75	2.00	2.25	2.50	2.75	3.00	3.25	3.50	3.75	4.00	4.25	4.50	4.75	5.00	5.25	5.50	5.75	6.00	6.25	6.50	6.75										
prep	2008	24	24		4	20																											0.92						
prep	2007	23	23	1	5	6	10	1																									0.98	0.97	0.01				
yr1	2008	25	25		1		7	11	4	1	1																						1.50						
prep	2006	18	18		5	7	6																											0.94	0.97	-0.02			
yr1	2007	13	13		1		9	1	2																								1.56	1.49	0.07				
yr2	2008	17	17				3	4	7	1	2																							1.93					
prep	2005																																						
yr1	2006	30	30		1		12	13	2	1	1																								1.44	1.47	-0.03		
yr2	2007	26	25				4	7	10	2	1	1																							1.95	1.96	-0.01		
yr3	2008	17	17				1	4		2	7	2	1																						2.37				
yr1	2005																																						
yr2	2006	23	22		1		1	5	4	6	3	1	1																							1.85	1.95	-0.10	
yr3	2007	18	18		1				3		5	2	7																							2.36	2.43	-0.07	
yr4	2008	21	21				1			3	2	6	2	5	1	1																				2.82			
yr2	2005																																						
yr3	2006	34	34				1	4		2	19	6	2																								2.48	2.42	0.06
yr4	2007	27	27					1		6	5	5	10																								2.90	2.91	-0.01
yr5	2008	25	25							2	1	5	1	7	4	4	1																			3.43			
yr3	2005																																						
yr4	2006	18	18							2	3	1	8	4																							2.88	2.89	-0.02
yr5	2007	17	17							1	1	3	3	3		4	3	1	1																	3.49	3.39	0.10	
yr6	2008	19	18								1	1		3	2	2	3	3	2	1																3.81			
yr4	2005																																						
yr5	2006	36	33							1	3	6	5	11	7																					3.33	3.38	-0.06	
yr6	2007	34	31							1	3		7	3	5	5	6	1																		3.67	3.89	-0.22	
yr5	2005																																						
yr6	2006	26	26											2	1	6	13	2	2																	3.92	3.88	0.04	
yr6	2005																																						

shading indicates a 'C' grade (at the expected standard) on the VELS scale.

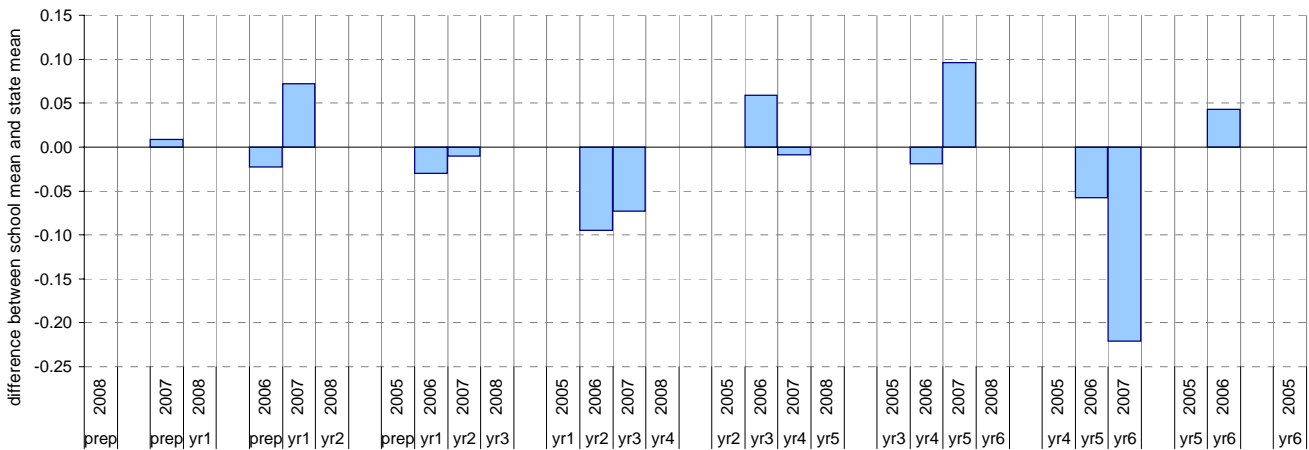
¹ The total number of students eligible to be assessed. This figure will typically match, or be very close to, the Year Level enrolment.

² The number of students assessed against the VELS. The difference between this figure and the total (1) should be accounted for by students assessed against Individual Learning Plans and/or the ESL companion in the case of English.

* In 2006, approx. 850 schools assessed their students against the 0.25 VELS scale. 2006 benchmarks are therefore based on a subset of schools.

[^] 2008 benchmarks will be calculated in August, when data from all schools has been submitted.

Difference between school mean and state mean[^], by cohort group



Teacher Judgments against the VELS - English (primary)

School no: 5384
School name: Caledonian Primary School
Source of data: Data retrieved electronically from CASES21.
Explanation: Teacher judgments of student achievement against the VELS.

Speaking and Listening

Year Level	Year	Total ¹	Assessed ²	Level 1			Level 2				Level 3				Level 4				Level 5				Level 6				Level 6E			School mean	State mean ³	Difference between school and state mean ⁴						
				0.00	0.50	1.00	1.25	1.50	1.75	2.00	2.25	2.50	2.75	3.00	3.25	3.50	3.75	4.00	4.25	4.50	4.75	5.00	5.25	5.50	5.75	6.00	6.25	6.50	6.75									
prep	2008	24	24		2	22																										0.96						
prep	2007	23	23	1	4	12	3	2	1																							0.98	0.97	0.01				
yr1	2008	25	25				6	14	4		1																					1.51						
prep	2006	18	18		5	13																											0.86	0.97	-0.10			
yr1	2007	13	13			1	2	8	1		1																					1.50	1.48	0.02				
yr2	2008	17	17				2	4	7	2	1	1																					1.99					
prep	2005																																					
yr1	2006	30	30		2		12	11	5																									1.41	1.48	-0.07		
yr2	2007	26	25					1	5	13	6																							1.99	1.98	0.01		
yr3	2008	17	17					1	2		2	8	4																					2.43				
yr1	2005																																					
yr2	2006	23	22				1	3	4	7	7																								1.93	1.98	-0.04	
yr3	2007	18	18					1	2		2	9	4																						2.43	2.46	-0.03	
yr4	2008	21	21								5	2	11	3																					2.89			
yr2	2005																																					
yr3	2006	34	34								3	19	12																							2.57	2.45	0.12
yr4	2007	27	27								1	2	1	17	6																					2.98	2.94	0.04
yr5	2008	25	25									1	5	12	6	1																				3.51		
yr3	2005																																					
yr4	2006	18	18									6	7	5																						2.99	2.94	0.04
yr5	2007	17	17								1	1		2	9	4																				3.44	3.43	0.01
yr6	2008	19	18									1		2	4	7	4																			3.89		
yr4	2005																																					
yr5	2006	36	34								3	9	16	6																						3.43	3.43	0.01
yr6	2007	34	31										6	12	13																					3.81	3.94	-0.13
yr5	2005																																					
yr6	2006	26	26											1	3	17	3	2																		4.01	3.93	0.08
yr6	2005																																					

shading indicates a 'C' grade (at the expected standard) on the VELS scale.

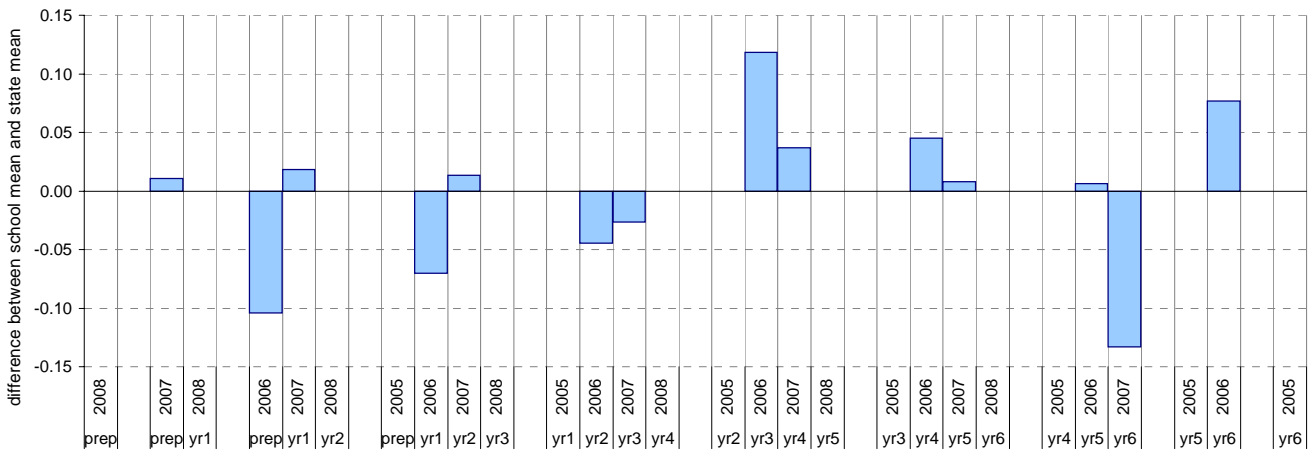
¹ The total number of students eligible to be assessed. This figure will typically match, or be very close to, the Year Level enrolment.

² The number of students assessed against the VELS. The difference between this figure and the total (1) should be accounted for by students assessed against Individual Learning Plans and/or the ESL companion in the case of English.

* In 2006, approx. 850 schools assessed their students against the 0.25 VELS scale. 2006 benchmarks are therefore based on a subset of schools.

⁴ 2008 benchmarks will be calculated in August, when data from all schools has been submitted.

Difference between school mean and state mean⁴, by cohort group



Teacher Judgments against the VELS - Mathematics (primary)

School no: 5384
School name: Caledonian Primary School
Source of data: Data retrieved electronically from CASES21.
Explanation: Teacher judgments of student achievement against the VELS.

Number

Year Level	Year	Total ¹	Assessed ²	Level 1			Level 2				Level 3				Level 4				Level 5				Level 6				Level 6E			School mean	State mean ³	Difference between school and state mean ⁴
				0.00	0.50	1.00	1.25	1.50	1.75	2.00	2.25	2.50	2.75	3.00	3.25	3.50	3.75	4.00	4.25	4.50	4.75	5.00	5.25	5.50	5.75	6.00	6.25	6.50	6.75			
prep	2008	24	24	5	18		1																						0.91			
prep	2007	23	23	3	13		3	3	1																			1.07	1.00	0.07		
yr1	2008	25	25		2		1	11	11																			1.56				
prep	2006	18	18	3	15																							0.92	1.00	-0.08		
yr1	2007	13	13		1			10	1	1																	1.52	1.51	0.01			
yr2	2008	17	17				1	5	2	7	2																1.81					
prep	2005																															
yr1	2006	30	30		1		9	11	7	2																		1.50	1.51	-0.01		
yr2	2007	26	25						9	14	2																1.93	1.99	-0.06			
yr3	2008	17	17						1	5	7	4															2.46					
yr1	2005																															
yr2	2006	23	22					3	6	10	3																1.90	1.99	-0.09			
yr3	2007	18	18				1	1		2	10	3	1														2.46	2.48	-0.02			
yr4	2008	21	21						1	2	3	6	4	5													2.80					
yr2	2005																															
yr3	2006	34	34				1	1		4	17	9	2														2.53	2.46	0.07			
yr4	2007	27	27							1	3	3	15	3	2												2.95	2.96	-0.01			
yr5	2008	25	25							1	2		4	9	6	3											3.50					
yr3	2005																															
yr4	2006	18	18							3	1	9	3	2													3.00	2.95	0.05			
yr5	2007	18	17							1	3		2	6	4	1											3.43	3.44	-0.02			
yr6	2008	19	18										2	4	2	4	6										3.86					
yr4	2005																															
yr5	2006	36	33						1	2	3	12	11	4													3.31	3.43	-0.12			
yr6	2007	34	31							1		1	8	12	5	2	2										3.76	3.95	-0.19			
yr5	2005																															
yr6	2006	26	26										1	2	8	9	4	2									3.93	3.93	0.00			
yr6	2005																															

shading indicates a 'C' grade (at the expected standard) on the VELS scale.

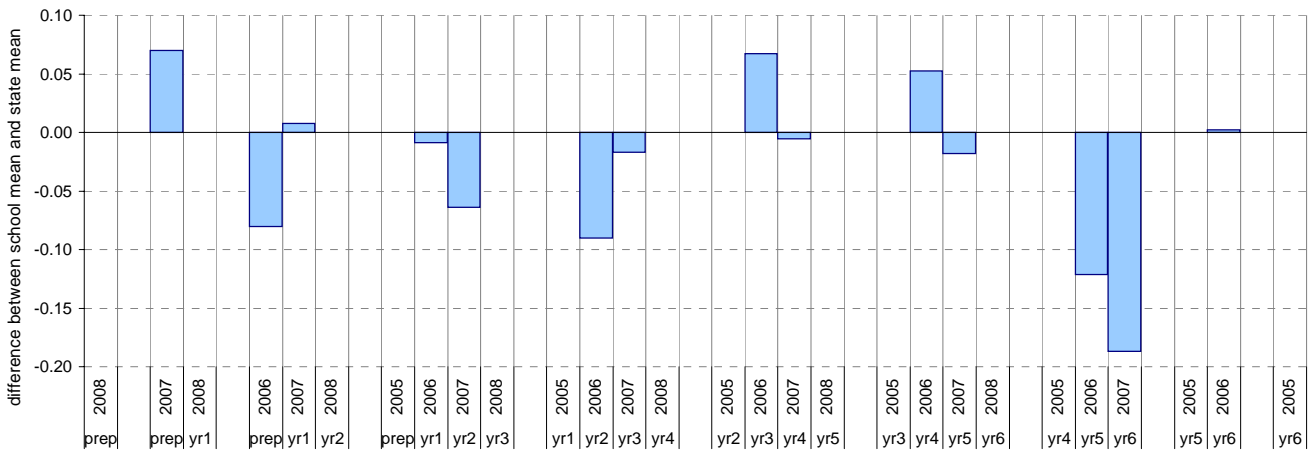
¹ The total number of students eligible to be assessed. This figure will typically match, or be very close to, the Year Level enrolment.

² The number of students assessed against the VELS. The difference between this figure and the total (1) should be accounted for by students assessed against Individual Learning Plans and/or the ESL companion in the case of English.

* In 2006, approx. 850 schools assessed their students against the 0.25 VELS scale. 2006 benchmarks are therefore based on a subset of schools.

⁴ 2008 benchmarks will be calculated in August, when data from all schools has been submitted.

Difference between school mean and state mean⁴, by cohort group



Teacher Judgments against the VELS - Mathematics (primary)

School no: 5384
School name: Caledonian Primary School
Source of data: Data retrieved electronically from CASES21.
Explanation: Teacher judgments of student achievement against the VELS.

Measurement, Chance and Data

Year Level	Year	Total ¹	Assessed ²	Level 1			Level 2				Level 3				Level 4				Level 5				Level 6				Level 6E			School mean	State mean [^]	Difference between school and state mean [^]	
				0.00	0.50	1.00	1.25	1.50	1.75	2.00	2.25	2.50	2.75	3.00	3.25	3.50	3.75	4.00	4.25	4.50	4.75	5.00	5.25	5.50	5.75	6.00	6.25	6.50	6.75				
prep	2008	24	24	6	17		1																								0.89		
prep	2007	23	23	4	15		3	1																						0.97	0.97	0.00	
yr1	2008	25	25				1	23	1																					1.50			
prep	2006	18	18	2	16																									0.94	0.97	-0.03	
yr1	2007	13	13		1	4	6	2																					1.42	1.49	-0.06		
yr2	2008	17	17			2	3	7	5																				1.72				
prep	2005																																
yr1	2006	30	30		1	12	16		1																					1.40	1.48	-0.08	
yr2	2007	26	25				7	15	3																				1.96	1.98	-0.02		
yr3	2008	17	17						6	7	4																		2.47				
yr1	2005																																
yr2	2006	23	22			2	1	6	11	2																			1.86	1.97	-0.11		
yr3	2007	18	18			1	1			1	11	2	2																2.47	2.46	0.01		
yr4	2008	21	21						3		5	7	6																2.90				
yr2	2005																																
yr3	2006	34	34				1		2	24	4	3																	2.54	2.45	0.09		
yr4	2007	27	27						1	2	3	14	6	1															2.98	2.95	0.03		
yr5	2008	25	25						1		1		6	9	8														3.46				
yr3	2005																																
yr4	2006	18	18						2	3	10	3																	2.94	2.94	0.01		
yr5	2007	17	17								4		2	9	2														3.38	3.43	-0.05		
yr6	2008	19	18										1	5	2	7	3												3.83				
yr4	2005																																
yr5	2006	36	33						1	2	3	10	14	3															3.32	3.42	-0.10		
yr6	2007	34	31							1			6	17	5	2													3.74	3.93	-0.19		
yr5	2005																																
yr6	2006	26	26								1		3	8	11	1	2												3.88	3.92	-0.05		
yr6	2005																																

shading indicates a 'C' grade (at the expected standard) on the VELS scale.

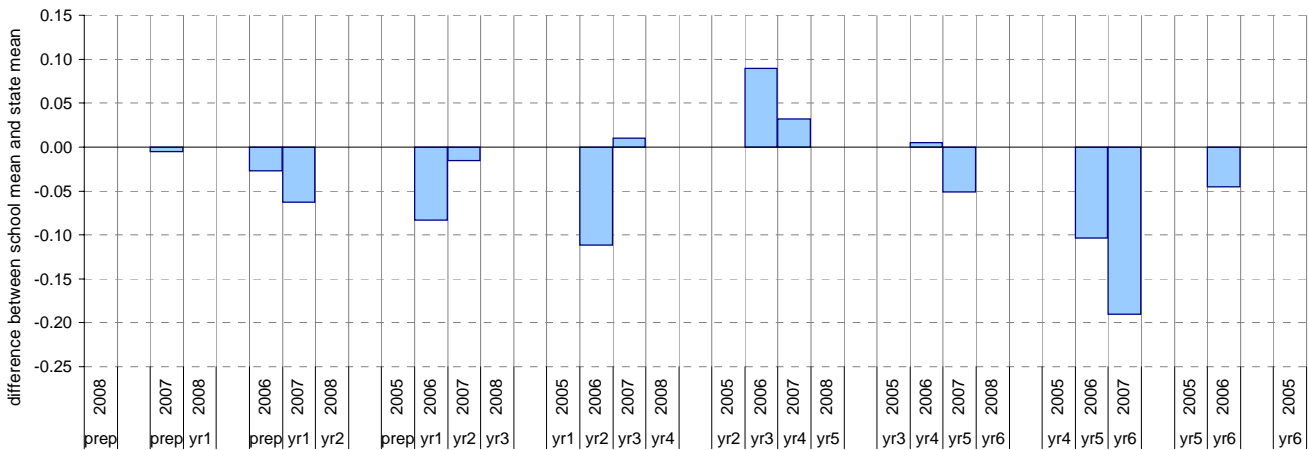
¹ The total number of students eligible to be assessed. This figure will typically match, or be very close to, the Year Level enrolment.

² The number of students assessed against the VELS. The difference between this figure and the total (1) should be accounted for by students assessed against Individual Learning Plans and/or the ESL companion in the case of English.

* In 2006, approx. 850 schools assessed their students against the 0.25 VELS scale. 2006 benchmarks are therefore based on a subset of schools.

[^] 2008 benchmarks will be calculated in August, when data from all schools has been submitted.

Difference between school mean and state mean[^], by cohort group



NAPLAN Year 3 and 5: Reading

School no: 5384

School name: Caledonian Primary School

Source of data: Victorian Curriculum and Assessment Authority.

Explanation: The National Assessment Program - Literacy and Numeracy (NAPLAN) is conducted each year for students in Years 3, 5, 7 and 9. For more detailed NAPLAN data, refer to the NAPLAN Data Service website at <http://naplands.vcaa.vic.edu.au>. A reference guide for analysing NAPLAN data is available at <http://www.vcaa.vic.edu.au/vcaa/prep10/naplan/schools/analysingnaplandata.pdf>.

Notes: * % student participation = (students who participated in NAPLAN / February enrolments) * 100

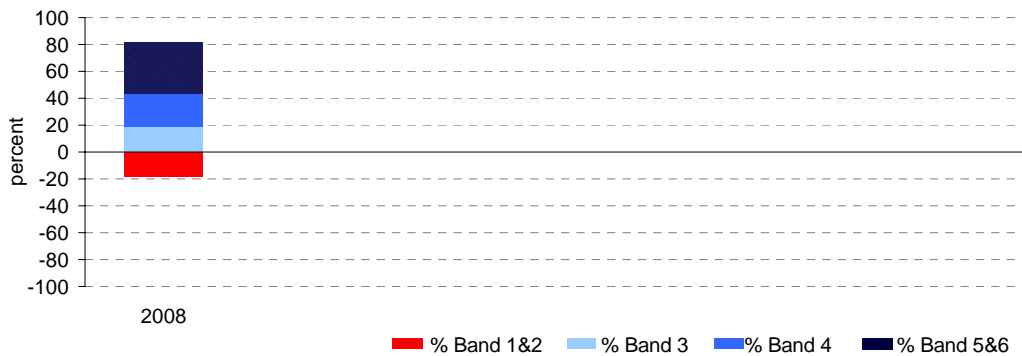
Year 3

	student participation		Percent of students by NAP Band						Mean Scaled Score	
	(n)	(%)*	Band 1	Band 2	Band 3	Band 4	Band 5	Band 6	School	State
2008	16	80	13	6	19	25	13	25	391.1	415.8

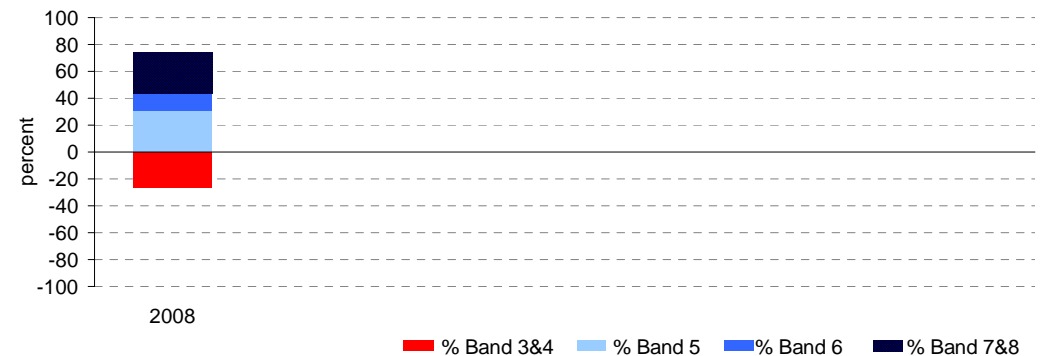
Year 5

	student participation		Percent of students by NAP Band						Mean Scaled Score	
	(n)	(%)*	Band 3	Band 4	Band 5	Band 6	Band 7	Band 8	School	State
2008	23	82	9	17	30	13	13	17	480.7	492.1

Percent of students by NAP Band

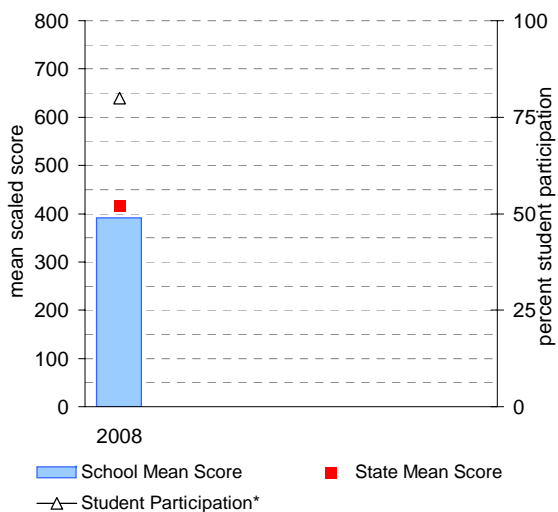


Percent of students by NAP Band

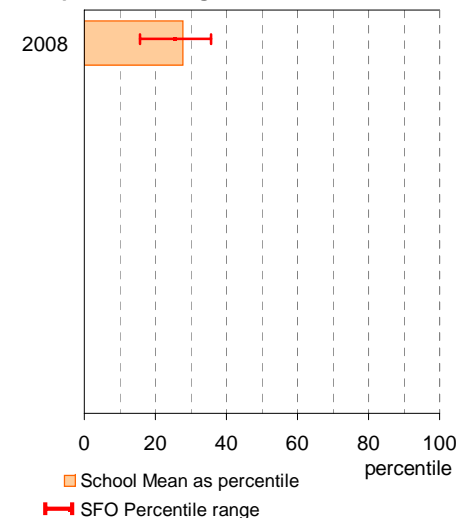


Year 3

School Mean against State Mean, including Participation

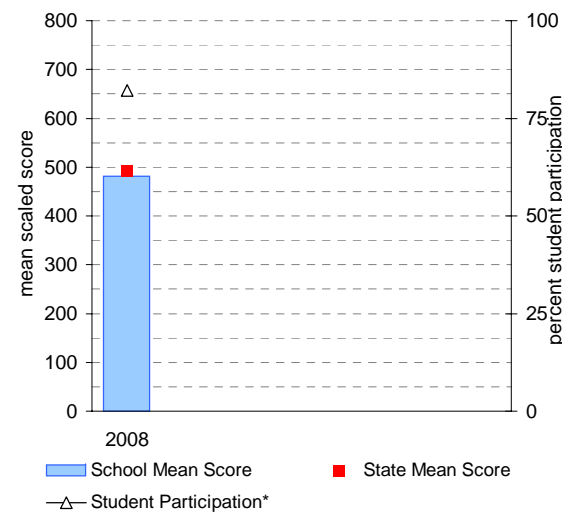


School Mean as percentile against SFO percentile range

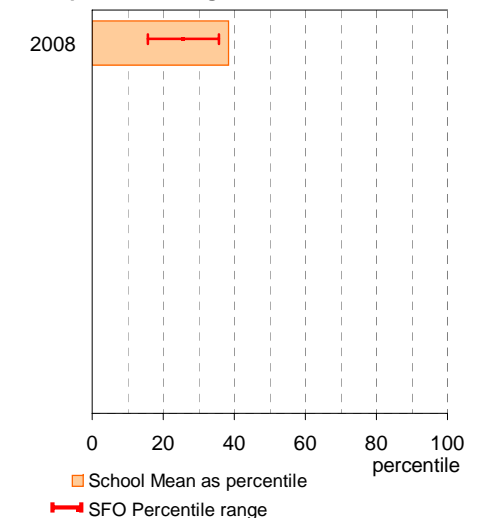


Year 5

School Mean against State Mean, including Participation



School Mean as percentile against SFO percentile range



NAPLAN Year 3 and 5: Writing

School no: 5384

School name: Caledonian Primary School

Source of data: Victorian Curriculum and Assessment Authority.

Explanation: The National Assessment Program - Literacy and Numeracy (NAPLAN) is conducted each year for students in Years 3, 5, 7 and 9. For more detailed NAPLAN data, refer to the NAPLAN Data Service website at <http://naplands.vcaa.vic.edu.au>. A reference guide for analysing NAPLAN data is available at <http://www.vcaa.vic.edu.au/vcaa/prep10/naplan/schools/analysingnaplandata.pdf>.

Notes: * % student participation = (students who participated in NAPLAN / February enrolments) * 100

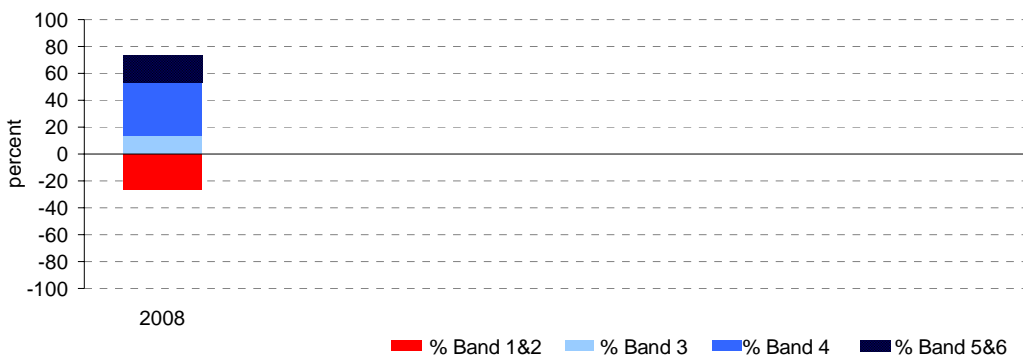
Year 3

	student participation		Percent of students by NAP Band						Mean Scaled Score	
	(n)	(%)*	Band 1	Band 2	Band 3	Band 4	Band 5	Band 6	School	State
2008	15	75	0	27	13	40	13	7	381.3	421.2

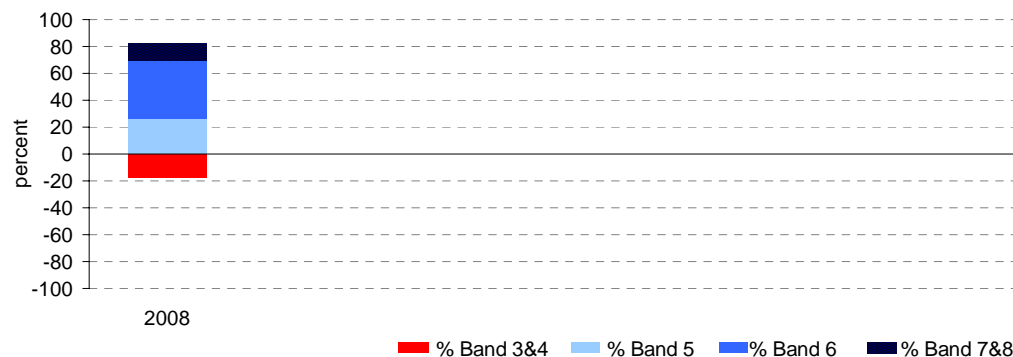
Year 5

	student participation		Percent of students by NAP Band						Mean Scaled Score	
	(n)	(%)*	Band 3	Band 4	Band 5	Band 6	Band 7	Band 8	School	State
2008	23	82	17	0	26	44	13	0	460.6	496.0

Percent of students by NAP Band

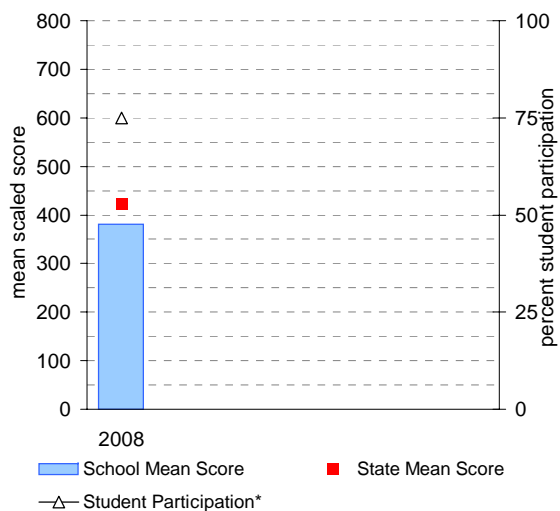


Percent of students by NAP Band

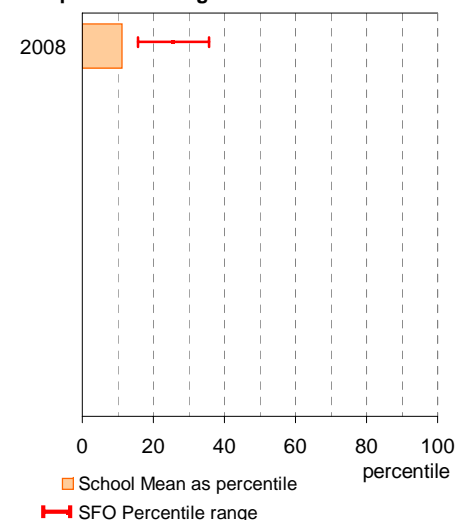


Year 3

School Mean against State Mean, including Participation

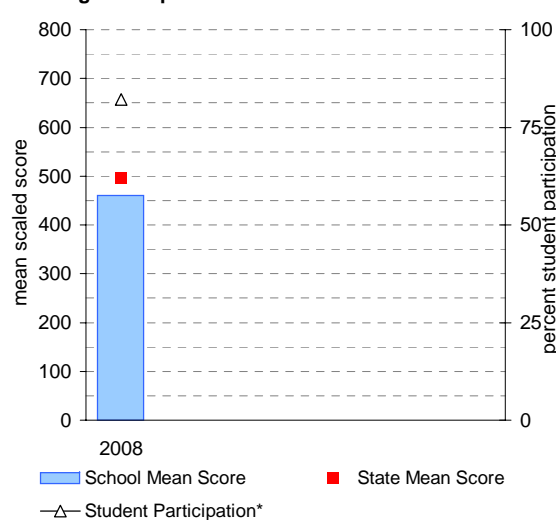


School Mean as percentile against SFO percentile range

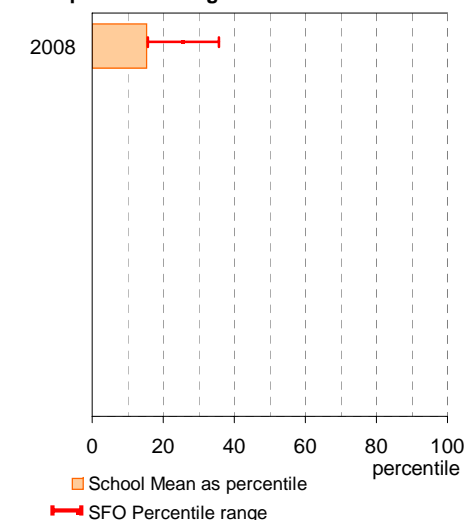


Year 5

School Mean against State Mean, including Participation



School Mean as percentile against SFO percentile range



NAPLAN Year 3 and 5: Numeracy

School no: 5384

School name: Caledonian Primary School

Source of data: Victorian Curriculum and Assessment Authority.

Explanation: The National Assessment Program - Literacy and Numeracy (NAPLAN) is conducted each year for students in Years 3, 5, 7 and 9. For more detailed NAPLAN data, refer to the NAPLAN Data Service website at <http://naplands.vcaa.vic.edu.au>. A reference guide for analysing NAPLAN data is available at <http://www.vcaa.vic.edu.au/vcaa/prep10/naplan/schools/analysingnaplandata.pdf>.

Notes: * % student participation = (students who participated in NAPLAN / February enrolments) * 100

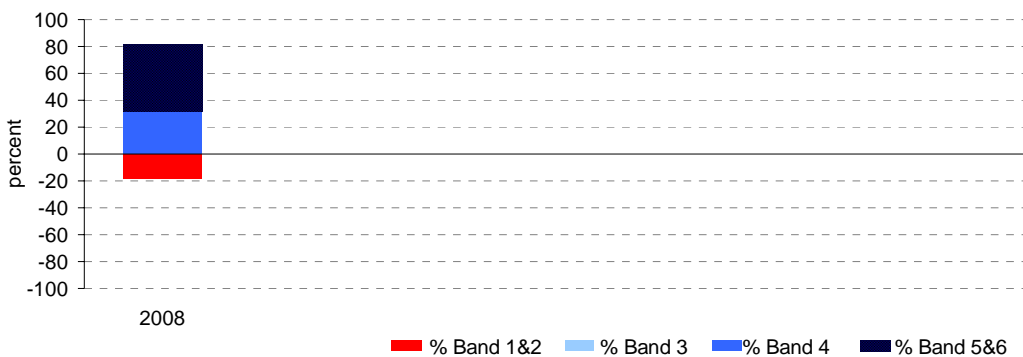
Year 3

	student participation		Percent of students by NAP Band						Mean Scaled Score	
	(n)	(%)*	Band 1	Band 2	Band 3	Band 4	Band 5	Band 6	School	State
2008	16	80	0	19	0	31	25	25	418.2	416.1

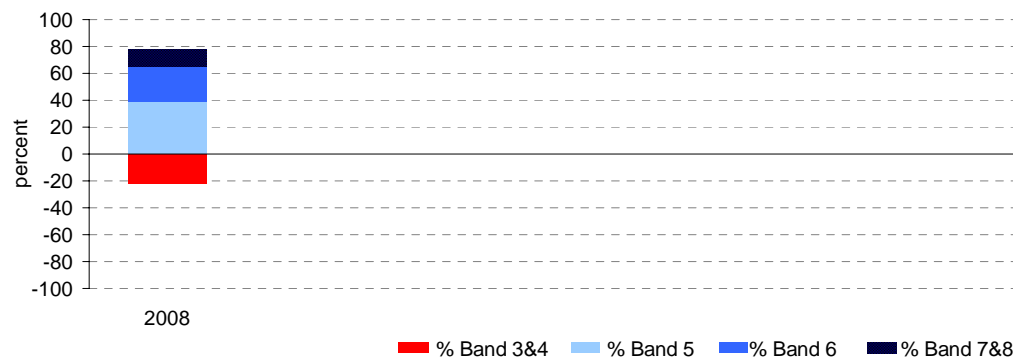
Year 5

	student participation		Percent of students by NAP Band						Mean Scaled Score	
	(n)	(%)*	Band 3	Band 4	Band 5	Band 6	Band 7	Band 8	School	State
2008	23	82	13	9	39	26	4	9	469.3	487.8

Percent of students by NAP Band

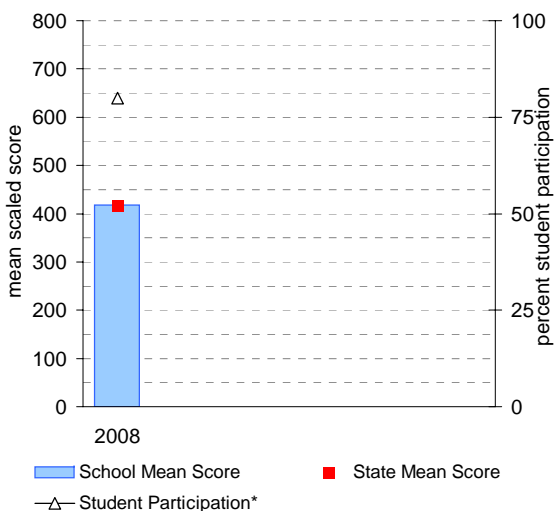


Percent of students by NAP Band

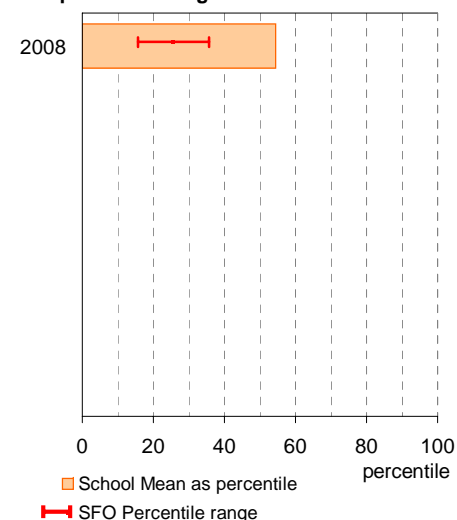


Year 3

School Mean against State Mean, including Participation

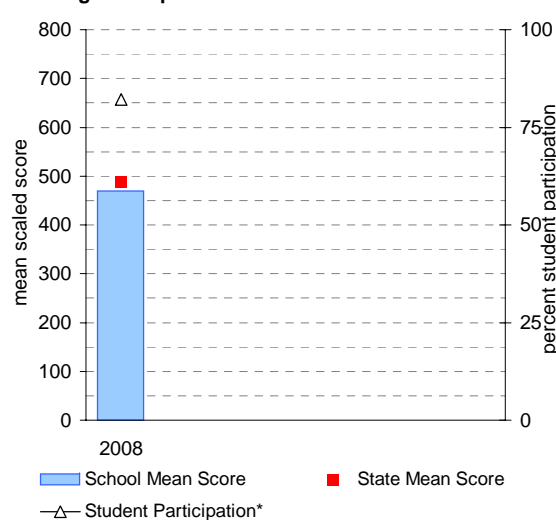


School Mean as percentile against SFO percentile range

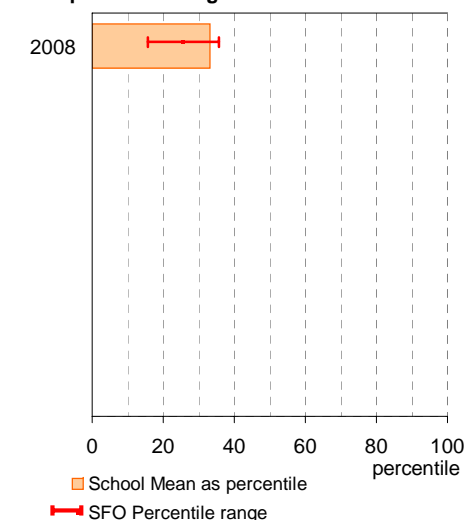


Year 5

School Mean against State Mean, including Participation



School Mean as percentile against SFO percentile range



AIM Year 3 and 5: Reading

School no: 5384

School name: Caledonian Primary School

Source of data: Victorian Curriculum and Assessment Authority.

Explanation: The Achievement Improvement Monitor (AIM) was a statewide assessment program conducted each year up until and including 2007 for students in Years 3, 5, 7 and 9. This has now been replaced by NAPLAN. For more detailed AIM data, refer to the AIM Data Service website at <http://aimds.vcaa.vic.edu.au>.

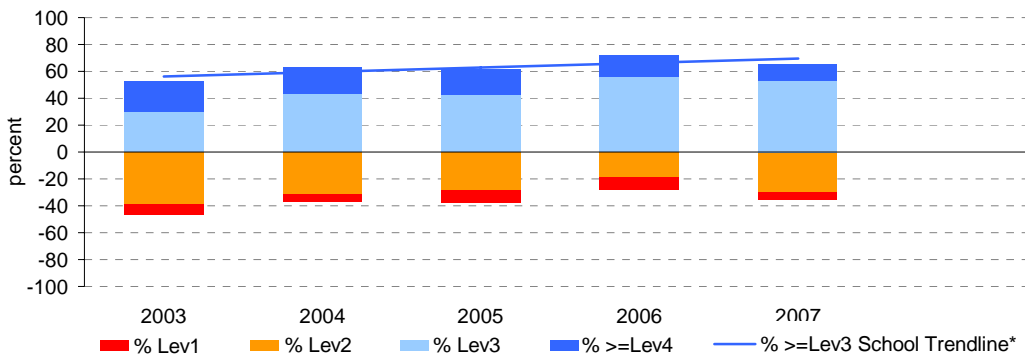
Notes: * The school trendline is only plotted when there is data for each calendar year.

** % student participation = (students who participated in AIM / Feb enrolments) * 100

Year 3

	student participation		Percent of students by VEL5 level							Mean CSF / VEL5 Score	
	(n)	(%)**	Lev1	Lev2	Lev3	Lev4	Lev5	Lev6	Lev6E	School	State
2003	36	90	8	39	31	22	0	0	0	2.1	2.3
2004	35	90	6	31	43	20	0	0	0	2.3	2.3
2005	21	91	10	29	43	19	0	0	0	2.3	2.4
2006	32	89	9	19	56	16	0	0	0	2.3	2.3
2007	17	68	6	29	53	12	0	0	0	2.2	2.3

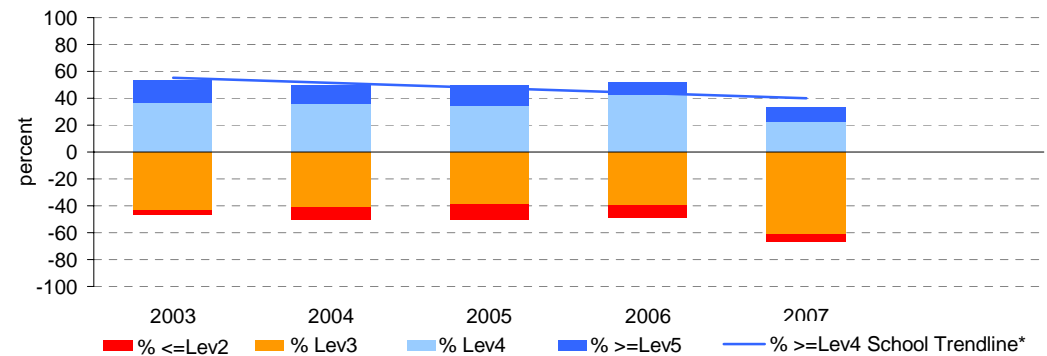
Percent of students by VEL5 level



Year 5

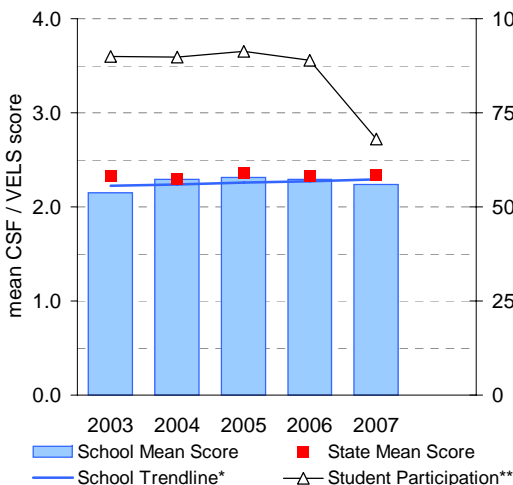
	student participation		Percent of students by VEL5 level							Mean CSF / VEL5 Score	
	(n)	(%)**	Lev1	Lev2	Lev3	Lev4	Lev5	Lev6	Lev6E	School	State
2003	30	88	0	3	43	37	17	0	0	3.2	3.2
2004	22	76	0	9	41	36	14	0	0	3.1	3.2
2005	26	90	0	12	38	35	15	0	0	3.1	3.2
2006	33	92	0	9	39	42	9	0	0	3.0	3.1
2007	18	95	0	6	61	22	11	0	0	2.9	3.2

Percent of students by VEL5 level

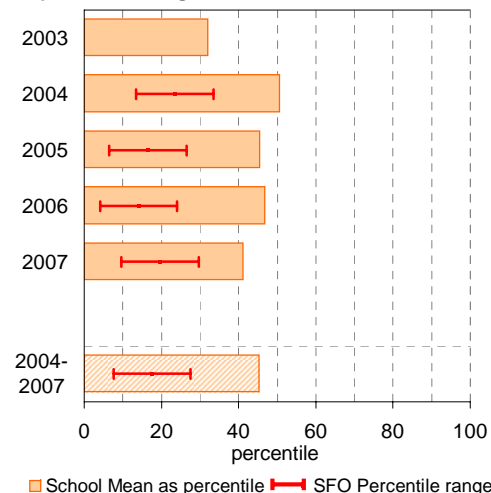


Year 3

School Mean against State Mean, including Participation

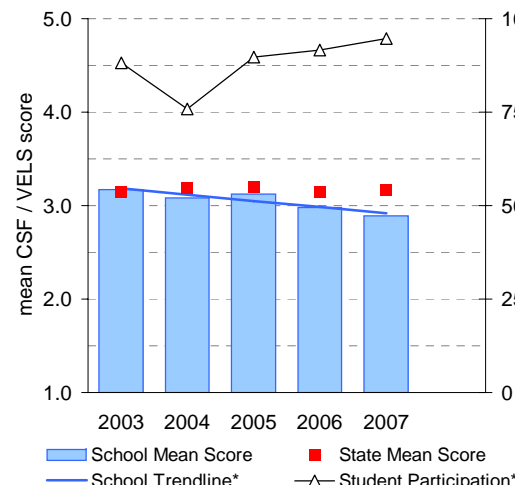


School Mean as percentile against SFO percentile range

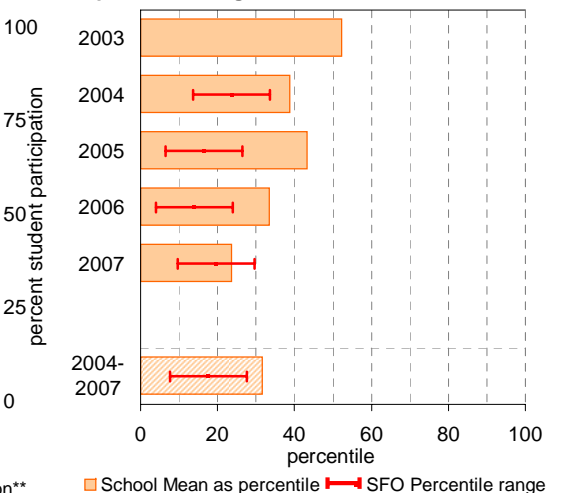


Year 5

School Mean against State Mean, including Participation



School Mean as percentile against SFO percentile range



AIM Year 3 and 5: Number

School no: 5384

School name: Caledonian Primary School

Source of data: Victorian Curriculum and Assessment Authority.

Explanation: The Achievement Improvement Monitor (AIM) was a statewide assessment program conducted each year up until and including 2007 for students in Years 3, 5, 7 and 9. This has now been replaced by NAPLAN. For more detailed AIM data, refer to the AIM Data Service website at <http://aimds.vcaa.vic.edu.au>.

Notes: * The school trendline is only plotted when there is data for each calendar year.
 ** % student participation = (students who participated in AIM / Feb enrolments) * 100

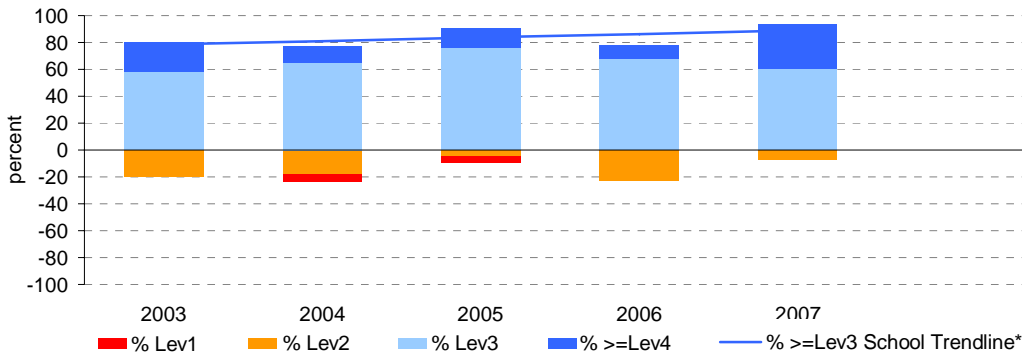
Year 3

	student participation		Percent of students by VEL5 level							Mean CSF / VEL5 Score	
	(n)	(%)**	Lev1	Lev2	Lev3	Lev4	Lev5	Lev6	Lev6E	School	State
2003	36	90	0	19	58	22	0	0	0	2.5	2.4
2004	34	87	6	18	65	12	0	0	0	2.4	2.4
2005	21	91	5	5	76	14	0	0	0	2.5	2.4
2006	31	86	0	23	68	10	0	0	0	2.3	2.4
2007	15	60	0	7	60	33	0	0	0	2.6	2.4

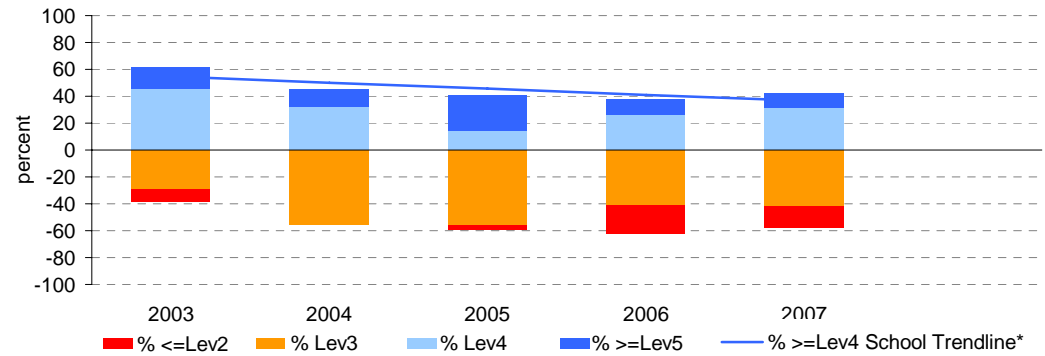
Year 5

	student participation		Percent of students by VEL5 level							Mean CSF / VEL5 Score	
	(n)	(%)**	Lev1	Lev2	Lev3	Lev4	Lev5	Lev6	Lev6E	School	State
2003	31	91	0	10	29	45	16	0	0	3.1	3.1
2004	22	76	0	0	55	32	14	0	0	3.0	3.2
2005	27	93	0	4	56	15	26	0	0	3.1	3.2
2006	34	94	0	21	41	26	12	0	0	2.8	3.2
2007	19	100	0	16	42	32	11	0	0	2.9	3.2

Percent of students by VEL5 level

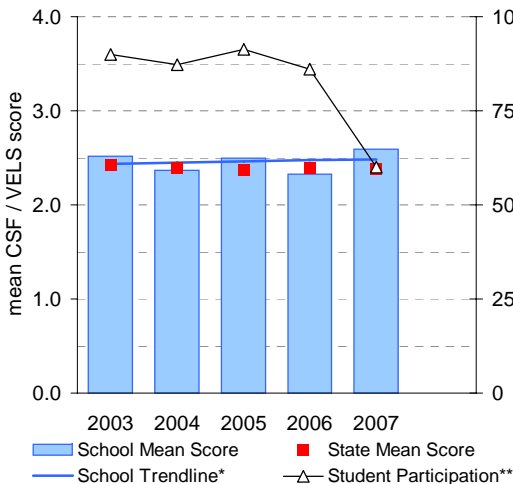


Percent of students by VEL5 level

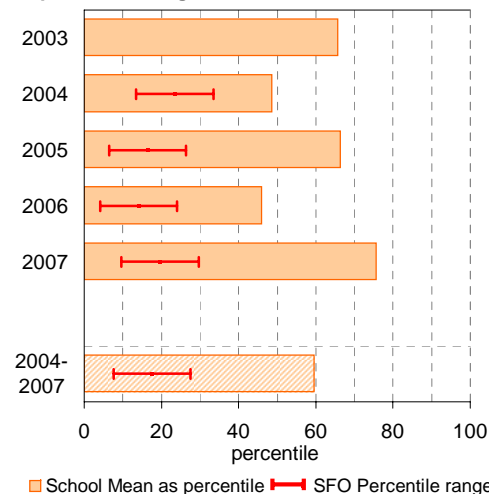


Year 3

School Mean against State Mean, including Participation

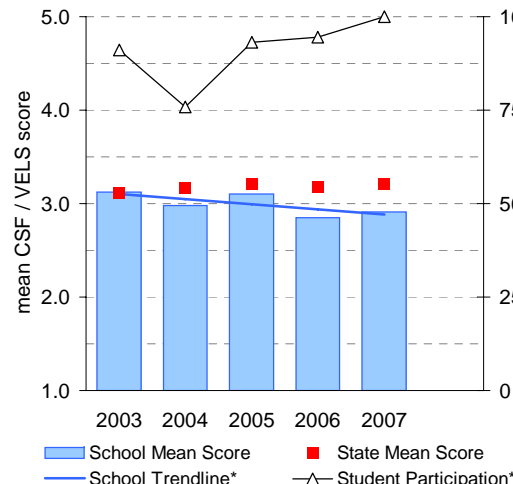


School Mean as percentile against SFO percentile range

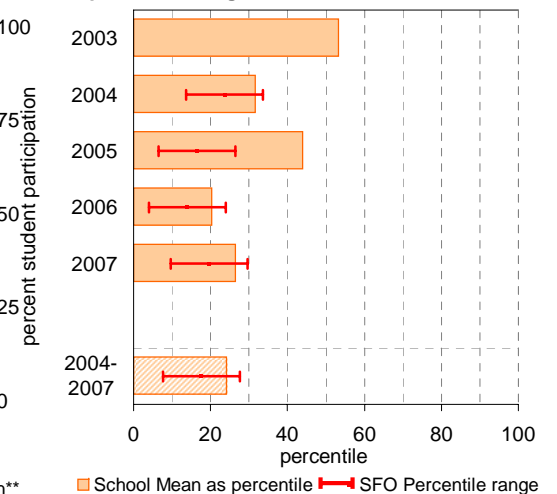


Year 5

School Mean against State Mean, including Participation



School Mean as percentile against SFO percentile range



Teacher Assessment of Student Progress (PSD students)

School no: 5384

School name: Caledonian Primary School

Explanation: Teachers assess their students' progress against the 8 VELs Domains / CSF KLAs using a 6-point scale (students in special schools and those who cannot be assessed against the VELs / CSF).

Source of data: Data transmitted from school to DEECD via an online web-form.

	No progress (%)	Little progress (%)	Satisfactory progress (%)	Good progress (%)	Very good progress (%)	Excellent progress (%)	Total students assessed ¹ (no.)
--	--------------------	---------------------------	---------------------------------	-------------------------	------------------------------	------------------------------	--

2004 (by CSF KLA)

English
Mathematics
Science
Technology
The Arts
H&PE
SOSE

2005 (by CSF KLA)

English
Mathematics
Science
Technology
The Arts
H&PE
SOSE

2006 (by VELs Domain)

English
Mathematics
Science
ICT
The Arts
H&PE
Civics & Citizenship

2007 (by VELs Domain)

English
Mathematics
Science
ICT
The Arts
H&PE
Civics & Citizenship

2008 (by VELs Domain)

English
Mathematics
Science
ICT
The Arts
H&PE
Civics & Citizenship

2007 Primary state benchmarks (by VELs Domain)*

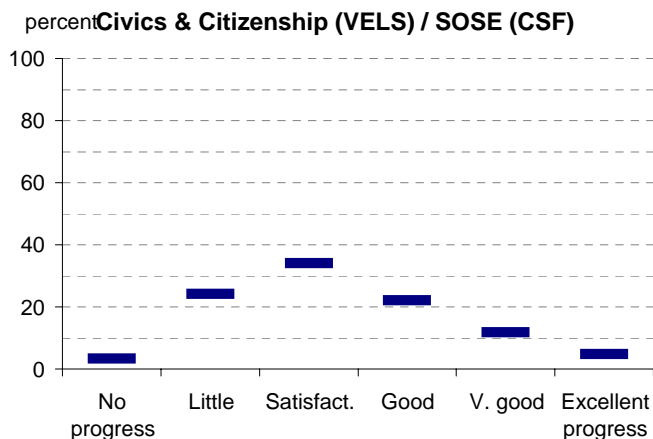
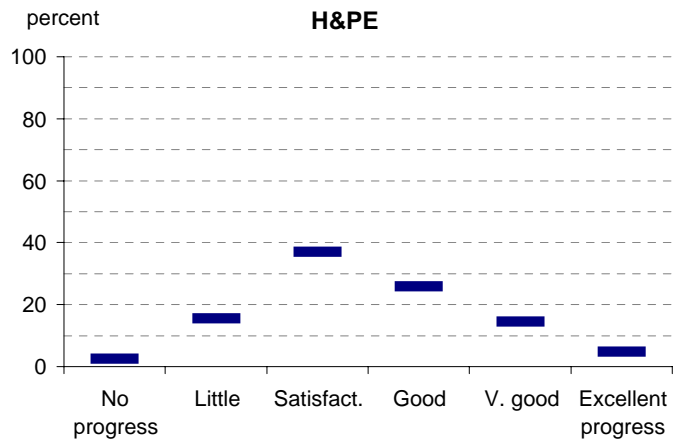
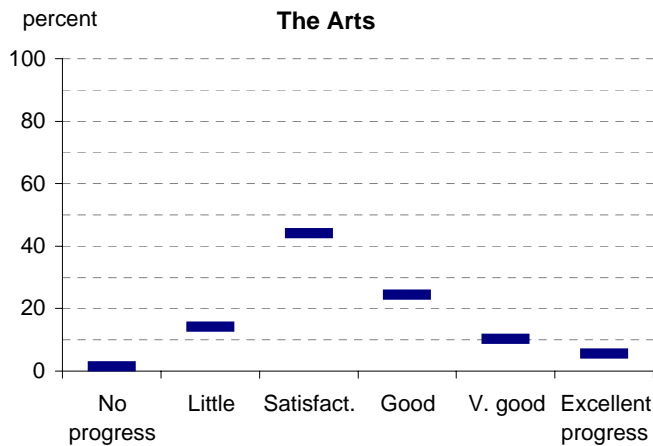
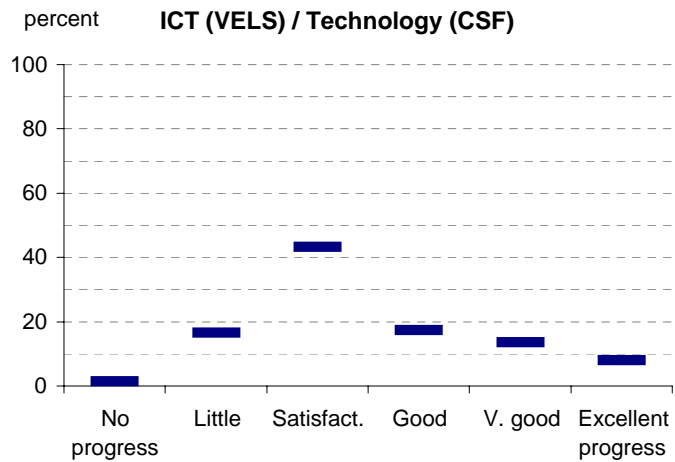
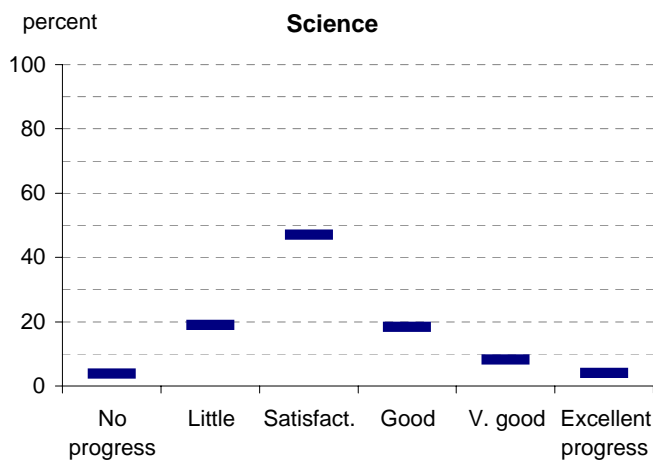
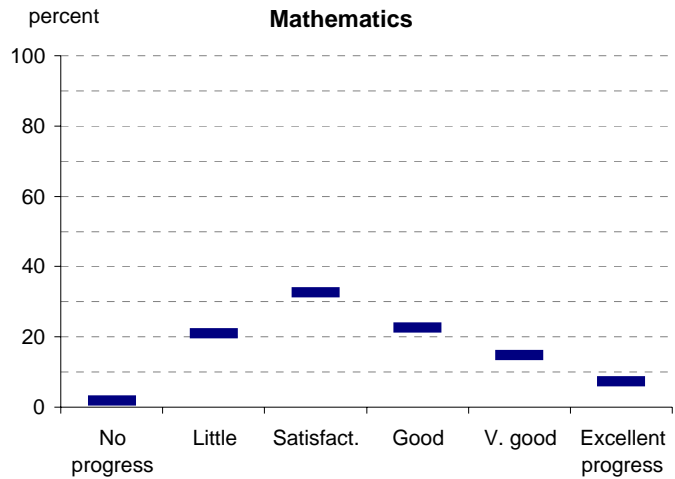
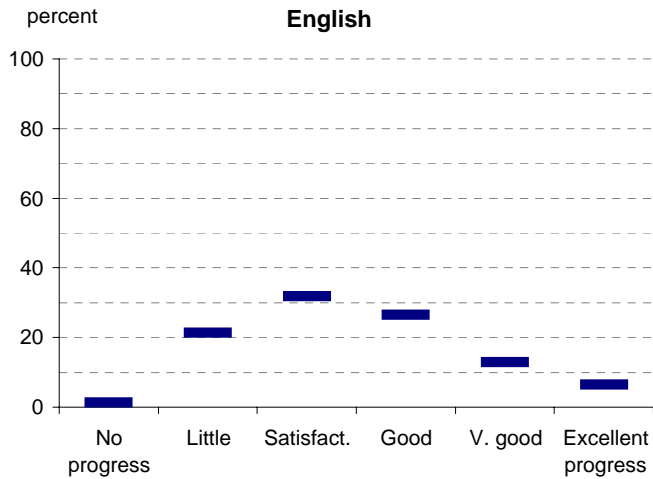
English	1	21	32	26	13	6
Mathematics	2	21	33	23	15	7
Science	4	19	47	18	8	4
ICT	1	17	43	17	14	8
The Arts	2	14	44	24	10	5
H&PE	2	15	37	26	15	5
Civics & Citizenship	3	24	34	22	12	5

Notes: ¹ If schools provided percentages only, it is not possible to report the number of students assessed. In these cases, the total percentage (100) will be shown.

* 2008 benchmarks will be calculated in August, when data from all schools has been submitted.

Teacher Assessment of Student Progress (PSD students)

School no: 5384
 School name: Caledonian Primary School



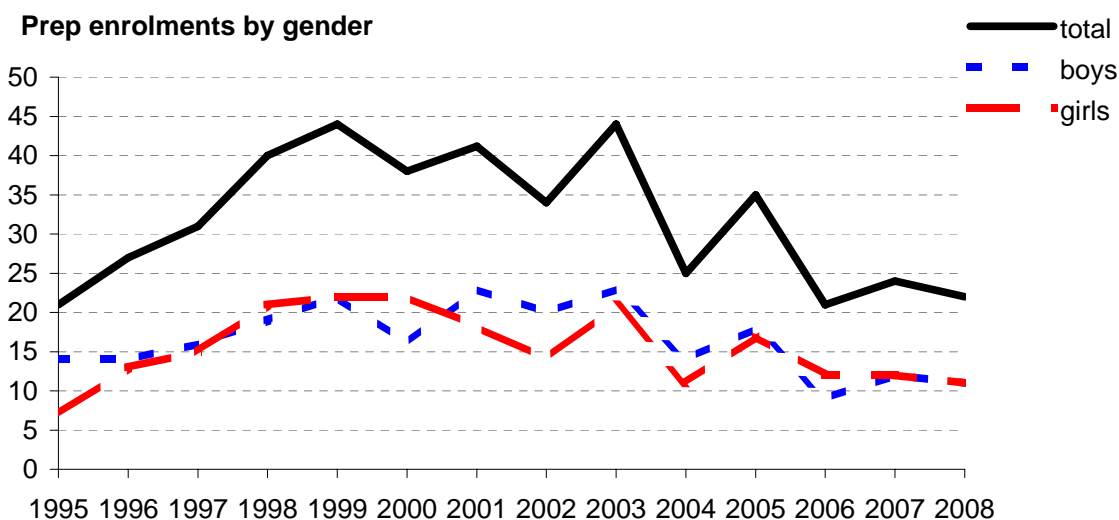
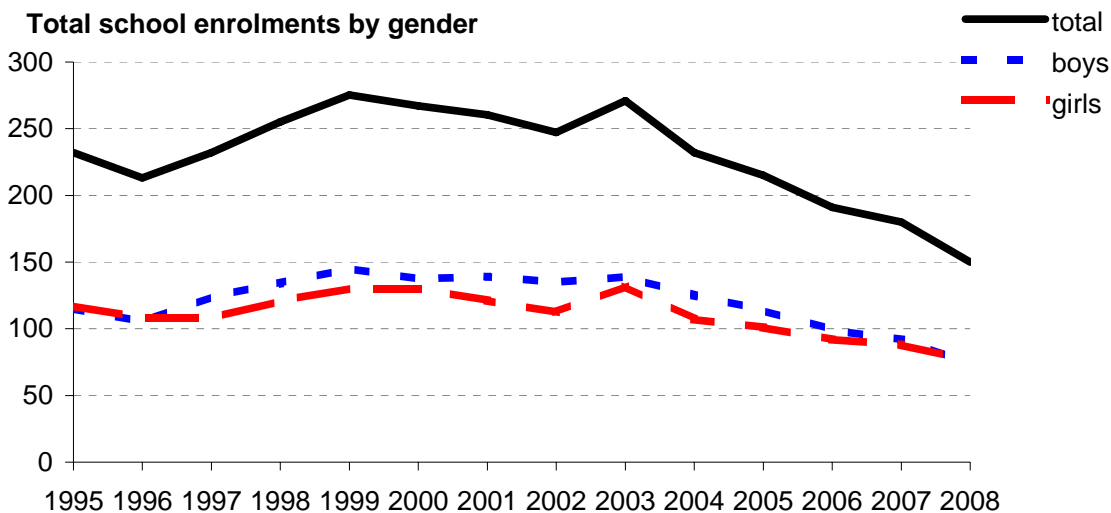
- 2004 (by CSF KLA)
- 2005 (by CSF KLA)
- 2006 (by VELS Domain)
- 2007 (by VELS Domain)
- 2008 (by VELS Domain)
- 2007 Primary state benchmarks (by VELS Domain)*

Notes: * 2008 benchmarks will be calculated in August, when data from all schools has been submitted.

Enrolments

School no: 5384
School name: Caledonian Primary School
Explanation: Enrolments at February census.
Source of data: February census.

Year	Total school enrolment			Prep enrolment			Year 7 enrolments		
	boys	girls	total	boys	girls	total	boys	girls	total
1995	115	117	232	14	7	21			
1996	105	108	213	14	13	27			
1997	124	108	232	16	15	31			
1998	134	121	255	19	21	40			
1999	145	130	275	22	22	44			
2000	137	130	267	16	22	38			
2001	139	121	260	23	18	41			
2002	135	112	247	20	14	34			
2003	139	132	271	23	21	44			
2004	125	107	232	14	11	25			
2005	114	101	215	18	17	35			
2006	99	92	191	9	12	21			
2007	92	88	180	12	12	24			
2008	74	76	150	11	11	22			



Student Absence

School no: 5384

School name: Caledonian Primary School

Source of data: Data retrieved electronically from CASES21.

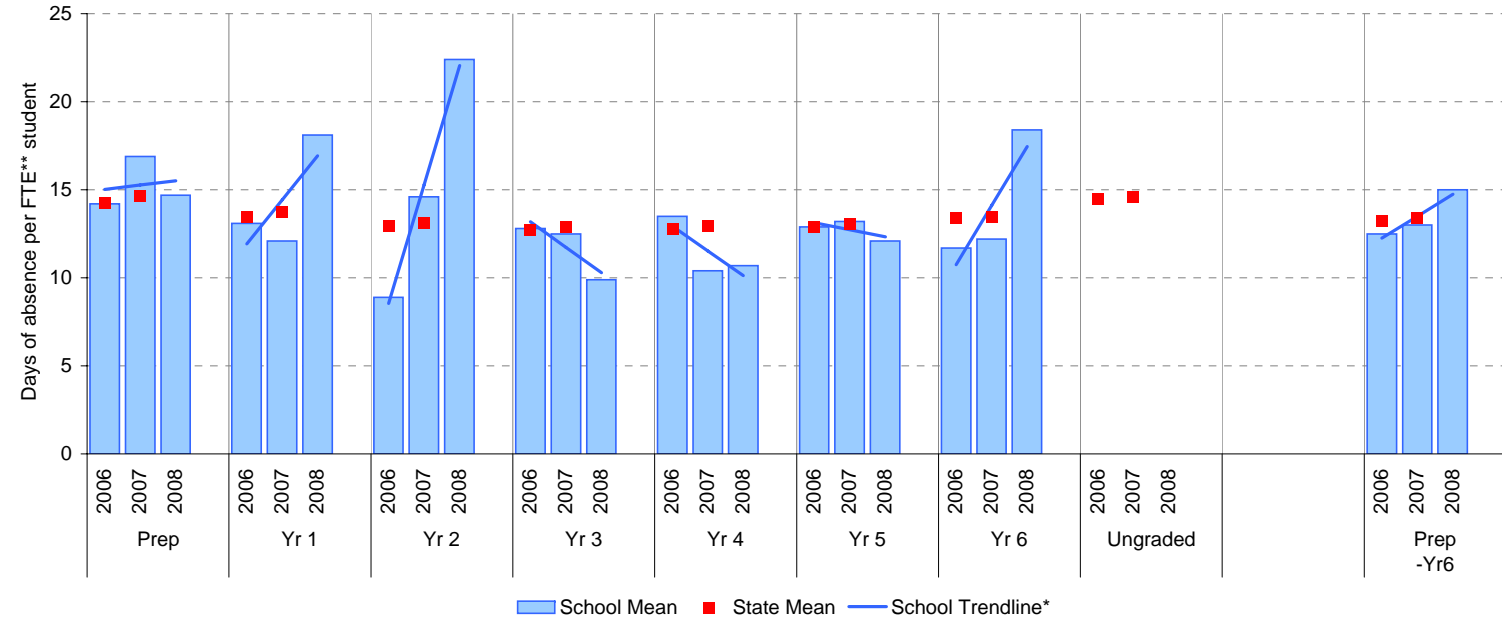
Explanation: The average (mean) number of absent days† per FTE** student.

Note that 20 absent days equates to 1 absent day per fortnight, and 10 absent days to 1 absent day per month.

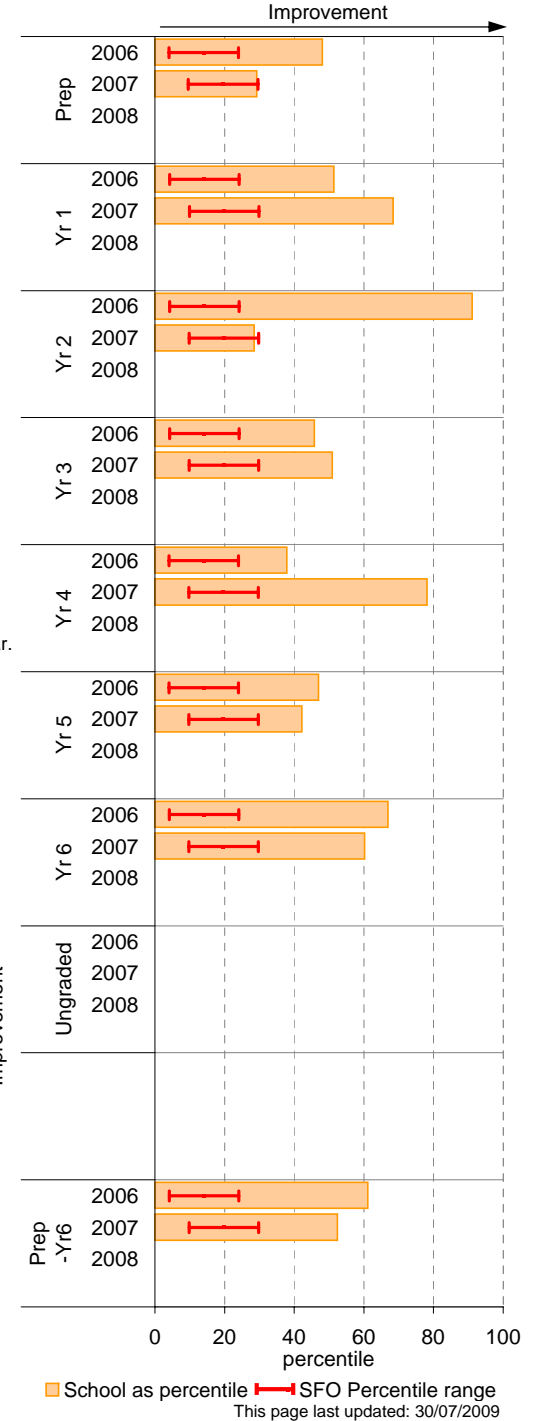
	School						2007 state benchmark^		
	2006		2007		2008		25th ptile	Mean	75th ptile
	Enrolments	Avg absent days / FTE** student	Enrolments	Avg absent days / FTE** student	Enrolments	Avg absent days / FTE** student			
Prep	19.6	14.2	22.7	16.9	22.9	14.7	12.0	14.6	17.7
Yr 1	31.2	13.1	16.0	12.1	23.9	18.1	11.5	13.8	16.1
Yr 2	23.3	8.9	27.4	14.6	18.1	22.4	11.0	13.1	15.1
Yr 3	36.6	12.8	22.3	12.5	18.5	9.9	10.8	12.9	14.9
Yr 4	18.2	13.5	30.2	10.4	20.6	10.7	10.8	12.9	15.0
Yr 5	37.7	12.9	19.0	13.2	26.8	12.1	10.6	13.1	15.0
Yr 6	24.6	11.7	34.3	12.2	19.6	18.4	11.0	13.4	15.7
Ungraded								14.6	
P-6 mean		12.5		13		15		13.4	

Notes: † Includes non-curriculum absences only (absence codes 200, 201, 202, 203, 205, 206, 207, 208, 209, 210, 211, 300, 401, 500, 700, 800, 804, 805, 900).
 * The school trendline is only plotted when there is data for each calendar year.
 ** FTE = Full Time Equivalent (including part-time and part-year fractions).
 ^ 2008 benchmarks and percentiles will be calculated in August, when data from all schools has been submitted.

School Mean against State Mean^



School Mean as percentile against SFO percentile range^



Parent Opinion

School no: 5384

School name: Caledonian Primary School

Explanation: A self-completion questionnaire to obtain parents' opinions of the school. Parents rated a number of statements using a scale where 1=strongly disagree & 7=strongly agree. The statements were grouped into the following categories.

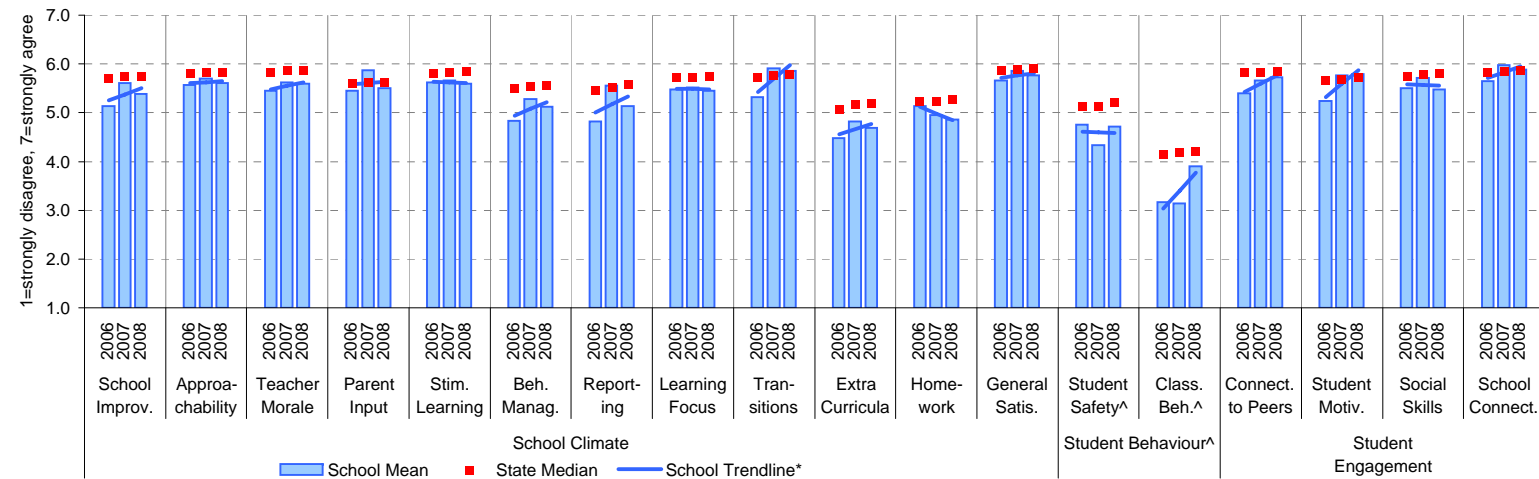
Source of data: Data scanned from questionnaires completed by parents.

Variable No.	Name	Year	School mean	State Primary median
1	School Improvement	2006	5.14	5.71
		2007	5.60	5.75
		2008	5.38	5.74
2	Approachability	2006	5.57	5.81
		2007	5.71	5.82
		2008	5.60	5.83
3	Teacher Morale	2006	5.44	5.82
		2007	5.62	5.86
		2008	5.59	5.85
4	Parent Input	2006	5.46	5.59
		2007	5.87	5.62
		2008	5.51	5.62
5	Stimulating Learning	2006	5.62	5.81
		2007	5.66	5.84
		2008	5.59	5.84
6	Behaviour Management	2006	4.84	5.51
		2007	5.29	5.54
		2008	5.12	5.55
7	Reporting	2006	4.81	5.45
		2007	5.56	5.51
		2008	5.13	5.56

Variable No.	Name	Year	School mean	State Primary median
8	Learning Focus	2006	5.48	5.71
		2007	5.52	5.72
		2008	5.45	5.73
9	Transitions	2006	5.31	5.72
		2007	5.91	5.76
		2008	5.86	5.79
10	Extra Curricula	2006	4.48	5.07
		2007	4.82	5.17
		2008	4.68	5.19
11	Homework	2006	5.13	5.23
		2007	4.95	5.23
		2008	4.86	5.28
12	General Satisfaction	2006	5.67	5.87
		2007	5.86	5.88
		2008	5.76	5.91
13	Student Safety^	2006	4.75	5.13
		2007	4.33	5.12
		2008	4.72	5.20
14	Classroom Behaviour^	2006	3.17	4.15
		2007	3.14	4.18
		2008	3.90	4.20

Variable No.	Name	Year	School mean	State Primary median
15	Connectedness to Peers	2006	5.40	5.83
		2007	5.67	5.83
		2008	5.73	5.85
16	Student Motivation	2006	5.24	5.66
		2007	5.77	5.69
		2008	5.79	5.72
17	Social Skills	2006	5.51	5.76
		2007	5.71	5.78
		2008	5.48	5.81
18	School Connectedness	2006	5.64	5.83
		2007	5.98	5.85
		2008	5.88	5.86

School Mean against Primary State Mean



Notes: * The school trendline is plotted when there is data for each calendar year.

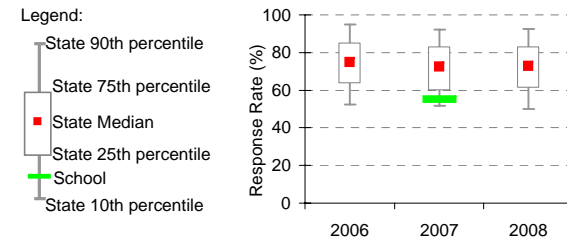
^^ Benchmarks available for Primary, Secondary, Pri/Sec, Special and SDS schools.

** If there were 6 or less respondents, table data is not shown for confidentiality reasons. If there were 3 or less respondents, graph data is not shown for confidentiality reasons.

^ Parents' responses to all negatively phrased questions have been reversed for reporting purposes. Across all variables, the higher the score or percentile rank, the more positive parents' perceptions.

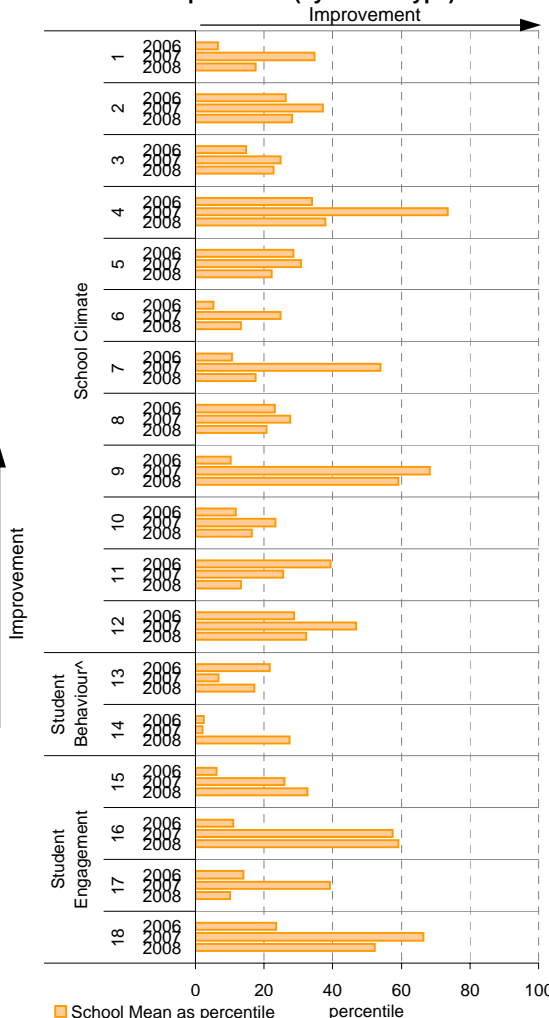
Produced by Data, Outcomes and Evaluation Division, DEECD

School response rate** against Primary school distribution



Year	No. of respondents	No. invited	Response Rate
2006	27		N/A
2007	22	40	55%
2008	27		N/A

School Mean as percentile (by school type)



This page last updated: 30/07/2009

Staff Opinion

School no: 5384

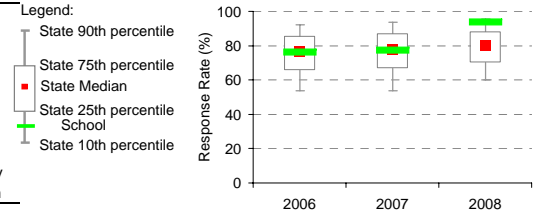
School name: Caledonian Primary School

Explanation: A self-completion questionnaire to obtain the staff's opinions of the school. The survey was administered online using the School Organisational Health Questionnaire.

Source of data: Data transmitted from school staff to DEECD via an online survey application.

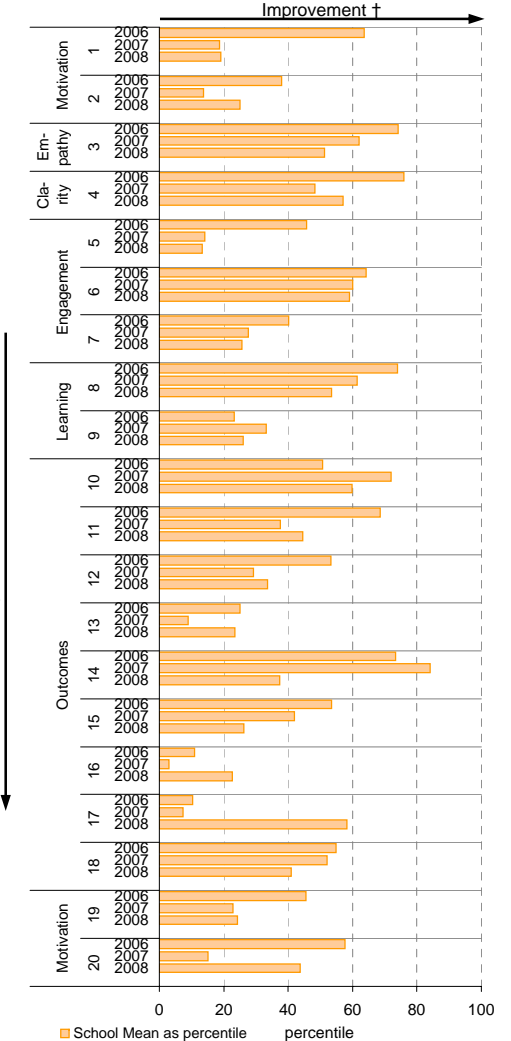
Variable	No.	Name	Year	School mean	State Primary median
1 Individual Morale	2006	78.3	75.6		
	2007	69.4	76.8		
	2008	71.6	78.1		
2 School Morale	2006	74.7	78.1		
	2007	65.9	79.2		
	2008	73.7	80.8		
3 Supportive Leadership	2006	87.8	80.0		
	2007	84.1	80.6		
	2008	82.7	82.2		
4 Role Clarity	2006	85.2	79.6		
	2007	79.8	80.1		
	2008	82.5	81.3		
5 Professional Interaction	2006	79.7	80.7		
	2007	72.1	81.9		
	2008	74.1	83.2		
6 Participative Decision-Making	2006	79.7	75.1		
	2007	79.0	76.3		
	2008	80.0	77.4		
7 Goal Congruence	2006	79.7	81.7		
	2007	77.7	82.6		
	2008	78.7	83.7		
8 Appraisal & Recognition	2006	79.2	71.6		
	2007	76.2	73.1		
	2008	75.8	75.0		
9 Professional Growth	2006	66.9	74.2		
	2007	71.2	76.0		
	2008	70.7	76.9		
10 Curriculum Coordination	2006	75.5	75.0		
	2007	82.2	75.6		
	2008	80.1	77.9		
11 Effective Discipline Policy	2006	85.4	79.9		
	2007	77.4	80.9		
	2008	81.3	82.0		
12 Student Orientation	2006	86.8	86.1		
	2007	83.3	86.6		
	2008	84.8	87.5		
13 Student Motivation	2006	69.6	76.8		
	2007	62.7	77.9		
	2008	72.3	79.5		
14 Student Decision-Making	2006	76.3	69.4		
	2007	81.5	71.3		
	2008	69.1	72.9		
15 Learning Environment	2006	81.8	81.3		
	2007	81.3	82.5		
	2008	79.0	84.1		
16 Student Misbehaviour	2006	45.1	21.7		
	2007	58.3	21.5		
	2008	33.3	20.0		
17 Classroom Misbehaviour	2006	24.5	13.8		
	2007	25.4	13.3		
	2008	11.5	12.6		
18 Excessive Work Demands	2006	41.4	42.9		
	2007	42.3	43.2		
	2008	45.0	41.7		
19 Individual Distress	2006	22.3	21.6		
	2007	27.3	21.1		
	2008	25.6	20.0		
20 School Distress	2006	26.6	28.8		
	2007	43.2	28.3		
	2008	29.3	26.7		

School response rate** against Primary school distribution

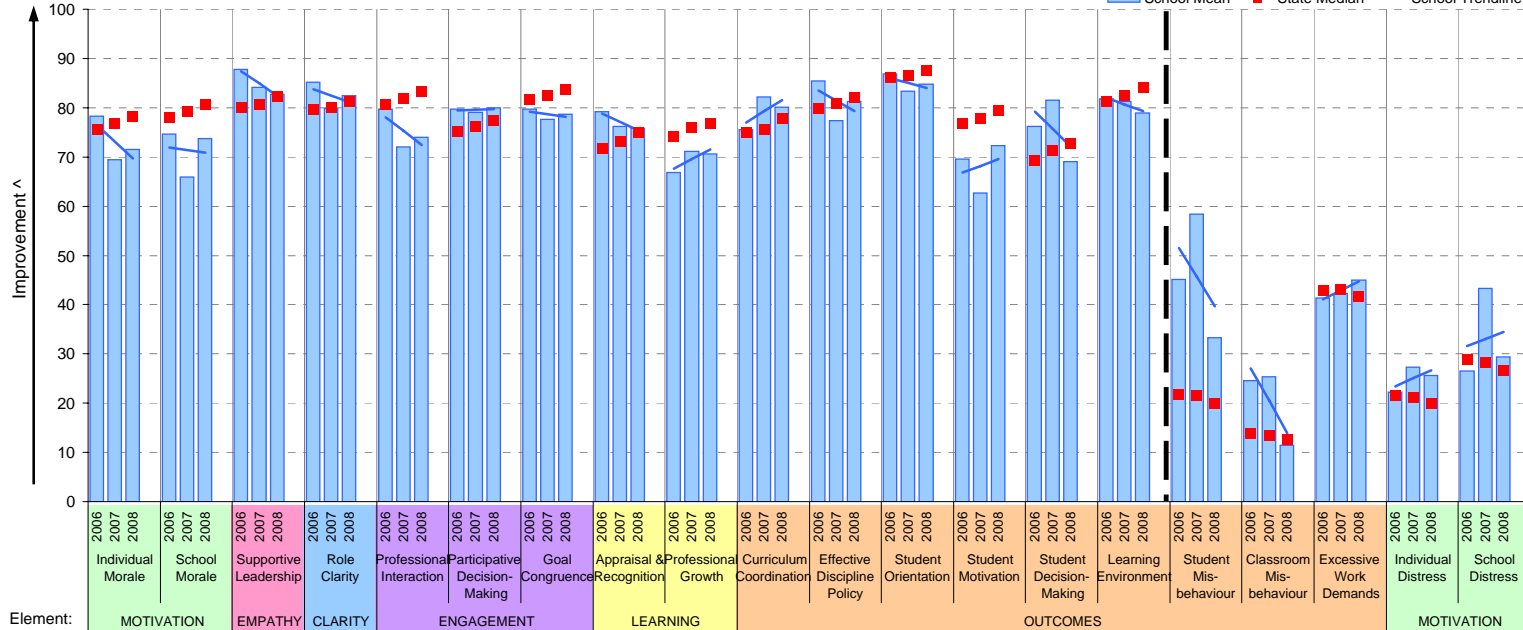


Year	No. of respondents	No. invited	Response Rate
2006	16	21	76%
2007	17	22	77%
2008	15	16	94%

School Mean as percentile (by school type)



School Mean against Primary State Median



Notes: * The school trendline is being trialled. It is only plotted when there is data for each calendar year.

** If there were 6 or less respondents, table data is not shown for confidentiality reasons. If there were 3 or less respondents, graph data is not shown for confidentiality reasons.

^ The higher the school mean, the more positive the outcome for variables 1 to 15. The lower the school mean, the more positive the outcome for variables 16 to 20.

† The higher the school percentile, the more positive the outcome for all variables.

^^ Benchmarks are available for Primary, Secondary, Pri/Sec, Special & SDS schools.

Performance & Development Culture (P&DC)^{††}

NEW

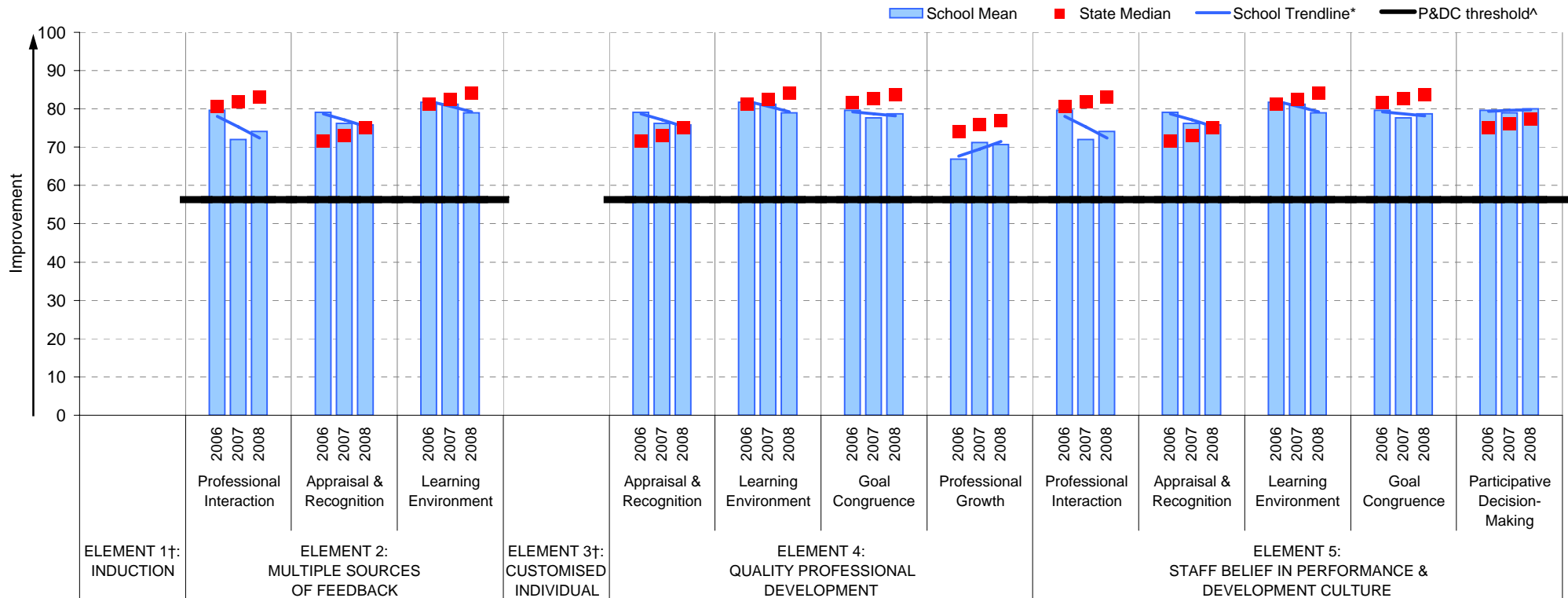
School no: 5384

School name: Caledonian Primary School

Explanation: The data on this page refers to the Staff Opinion Survey.

Source of data: Data transmitted from school staff to DEECD via an online survey application.

School Mean against Primary State Median



Notes:

†† An assessment of the correlation between the P&DC Questionnaire and the Staff Opinion Survey was undertaken using data from Victorian Government schools that completed both surveys 2005 to 2007 (ie. 699 schools). This led to the identification of the components of the Staff Opinion Survey that could be used to assist schools with the ongoing monitoring of their perform and development culture. Refer to the P&DC website for further information: <http://www.education.vic.gov.au/management/schoolimprovement/panddc/default.htm>. For numerical r relating to the above graph, refer to the Staff Opinion Survey page in this repc

† Note that there is no significant correlation between the Staff Opinion Survey and P&DC elements 1 (Induction) and 3 (Customised Individual Development Plc

^ The P&DC threshold was derived from the P&DC Questionnaire 'percent favourable' methodology where a school is considered at the standard of accreditation when their Element score is : favourable (ie. at least 75% of staff selected the top two response categories in the P&DC Questionnai

* The school trendline is only plotted when there is data for each calendar ye.

** If there were 3 or less respondents, graph data is not shown for confidentiality reason

^^ Benchmarks are available for Primary, Secondary, Pri/Sec, Special & SDS school

Staff Sick Leave

School no: 5384

School name: Caledonian Primary School

Explanation: The number of non-certificated and total sick leave days taken per staff member. A detailed explanation on how staff sick leave is calculated is provided at: education.vic.gov.au/management/schoolimprovement/performance/performancefaq.htm.

Source of data: Human Resources Management System (HRMS)^.

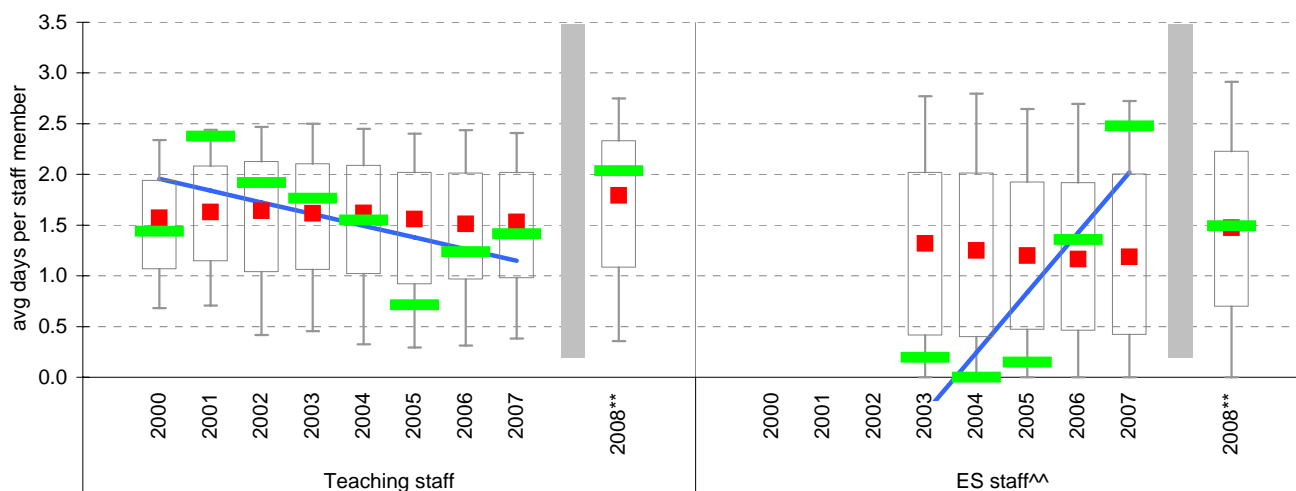
Non-Certificated sick leave days per staff member^

Staff Type	2000	2001	2002	2003	2004	2005	2006	2007	2008**	2008 State Median**
Teacher	1.44	2.38	1.92	1.76	1.55	0.71	1.24	1.41	2.04	1.79
ES^^					0	0.15	1.36	2.48	1.49	1.47

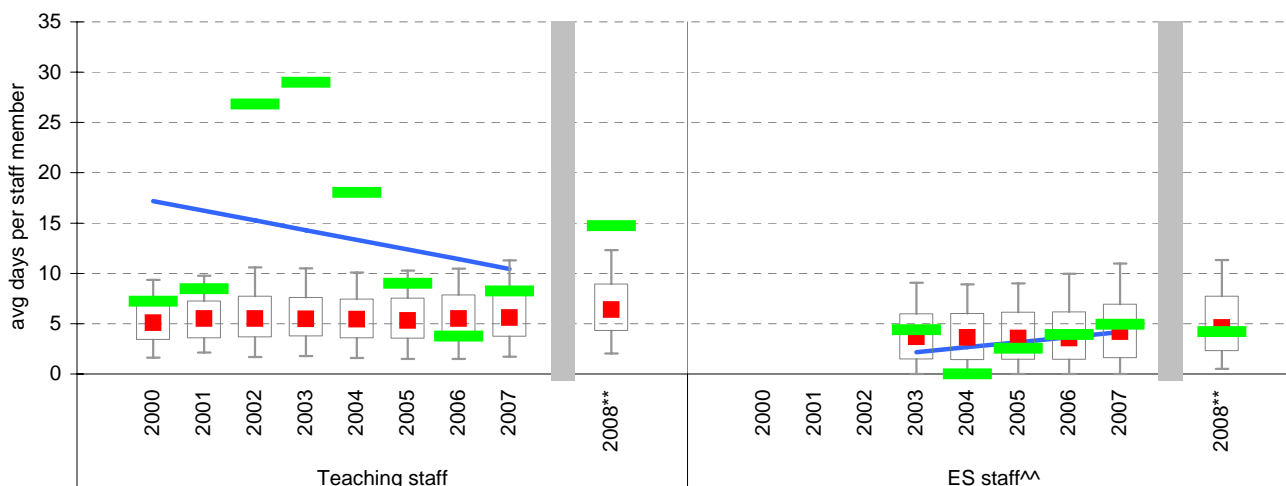
Total sick leave days per staff member^

Staff Type	2000	2001	2002	2003	2004	2005	2006	2007	2008**	2008 State Median**
Teacher	7.22	8.47	26.83	28.98	18.05	9.00	3.75	8.24	14.74	6.40
ES^^					0	2.56	3.92	4.93	4.21	4.63

NON-CERTIFICATED sick leave

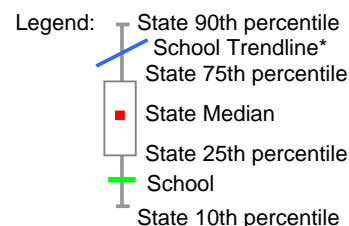


TOTAL sick leave



Notes:

- * The school trendline is only plotted when there is data for each calendar year.
- ** The way in which sick leave data are calculated changed in 2008. As such, data from 2008 cannot be compared with previous years.
- ^ There may be some discrepancy between the results from CASES21 and those from HRMS. The latter are considered to be more accurate.
- ^^ Data for ES (Education Support) staff is only available from 2003. In previous versions of this report, ES staff were known as SSO staff.



Teaching Staff Retention

School no: 5384

School name: Caledonian Primary School

Explanation: The retention rate of teaching staff is determined by matching staff payroll records for the last pay in June of one year (Year A), to the last pay in June of the following year (Year B).

Source of data: Human Resources Management System (HRMS).

Teaching Staff*

Year A	Year B	Number of Teaching Staff in Year A	Number of Teaching Staff retained in Year B	Teaching Staff Retention Rate	Statewide Average
2005	2006	16	13	81%	87%
2006	2007	14	13	93%	86%
2007	2008	14	11	79%	84%

Of the 16 teaching service staff at June 2005 (including those on leave without pay), 13 or 81% were still at the school at June 2006. This figure across all Government schools was 87%.

Of the 14 teaching service staff at June 2006 (including those on leave without pay), 13 or 93% were still at the school at June 2007. This figure across all Government schools was 86%.

Of the 14 teaching service staff at June 2007 (including those on leave without pay), 11 or 79% were still at the school at June 2008. This figure across all Government schools was 84%.

Ongoing Teaching Staff**

Year A	Year B	Number of Ongoing Teaching Staff in Year A	Number of Ongoing Teaching Staff retained in Year B	Ongoing Teaching Staff Retention Rate	Statewide Average
2005	2006	15	12	80%	91%
2006	2007	13	12	92%	90%
2007	2008	13	10	77%	88%

Of the 15 ongoing teaching service staff at June 2005 (including those on leave without pay), 12 or 80% were still at the school at June 2006. This figure across all Government schools was 91%.

Of the 13 ongoing teaching service staff at June 2006 (including those on leave without pay), 12 or 92% were still at the school at June 2007. This figure across all Government schools was 90%.

Of the 13 ongoing teaching service staff at June 2007 (including those on leave without pay), 10 or 77% were still at the school at June 2008. This figure across all Government schools was 88%.

Notes: * Teaching staff includes Principal class, Teacher class and Instructor class. Teaching staff employed as visiting teachers, guidance officers, curriculum consultants, etc. are excluded as they are not charged to a particular school.

^ Not including fixed term staff, except for where staff had changed from ongoing in Year A to fixed term in Year B.

Bank Balances

School no: 5384

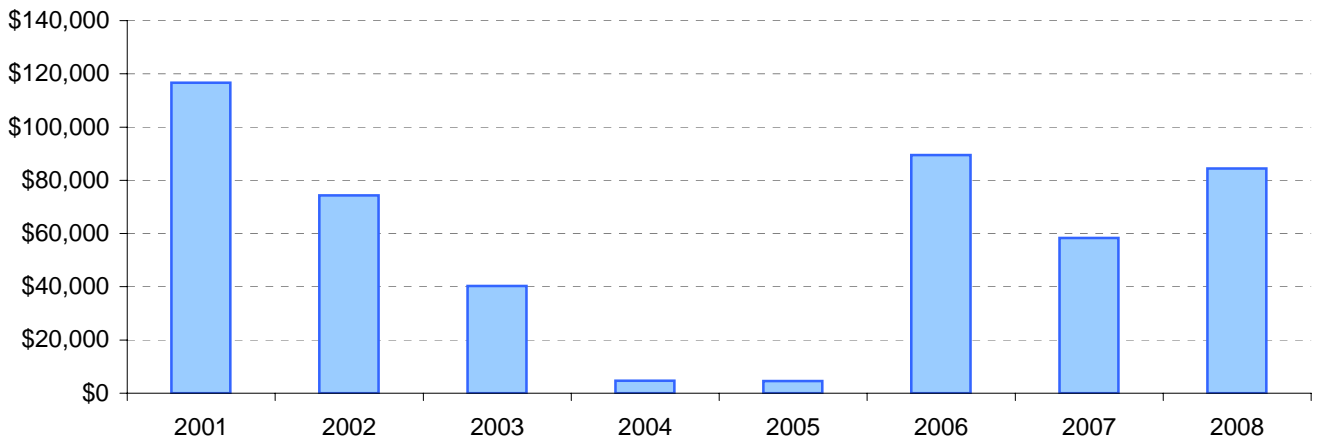
School name: Caledonian Primary School

Explanation: Account balance figures include official and investment accounts, and are calculated by taking the opening balance at 1st January plus the total receipts at 31st December less total payments at 31st December.

Account Balances (Official plus Investment Accounts)

2001	\$116,698	2005	\$4,563
2002	\$74,271	2006	\$89,475
2003	\$40,242	2007	\$58,303
2004	\$4,680	2008	\$84,380

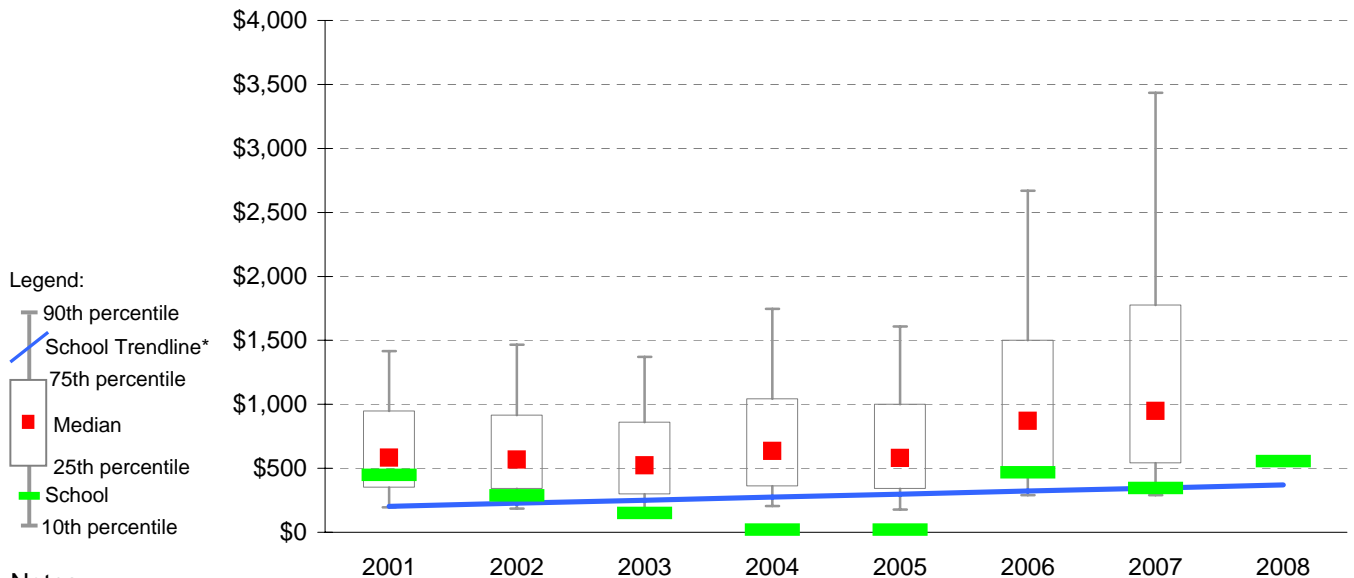
Account Balances



Account Balances (Official plus Investment Accounts) per student[†]

2001	\$448	2005	\$20
2002	\$287	2006	\$468
2003	\$151	2007	\$345
2004	\$19	2008	\$555

School account balances per student enrolled in August census plotted on state Primary benchmarks[^]



Notes:

* The school trendline is being trialled. It is only plotted when there is data for each calendar year.

† The account balance per student has been calculated to enable some comparison to be made between schools.

^ Benchmarks for primary, secondary, pri/sec, SDS, special and language schools.